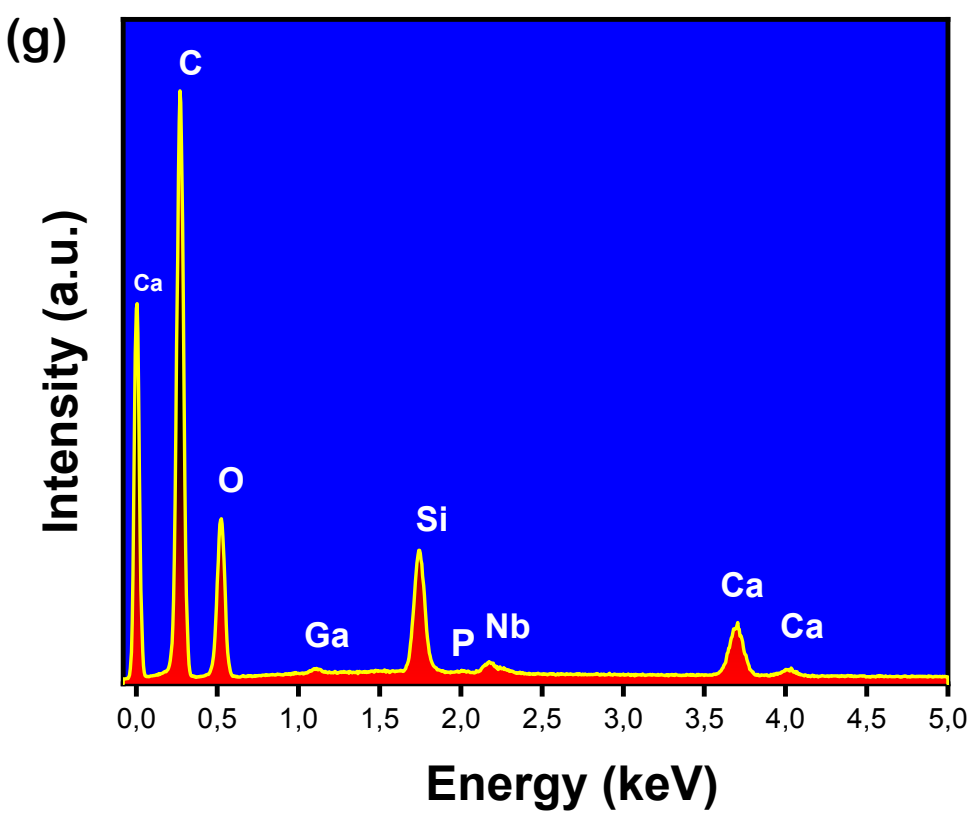
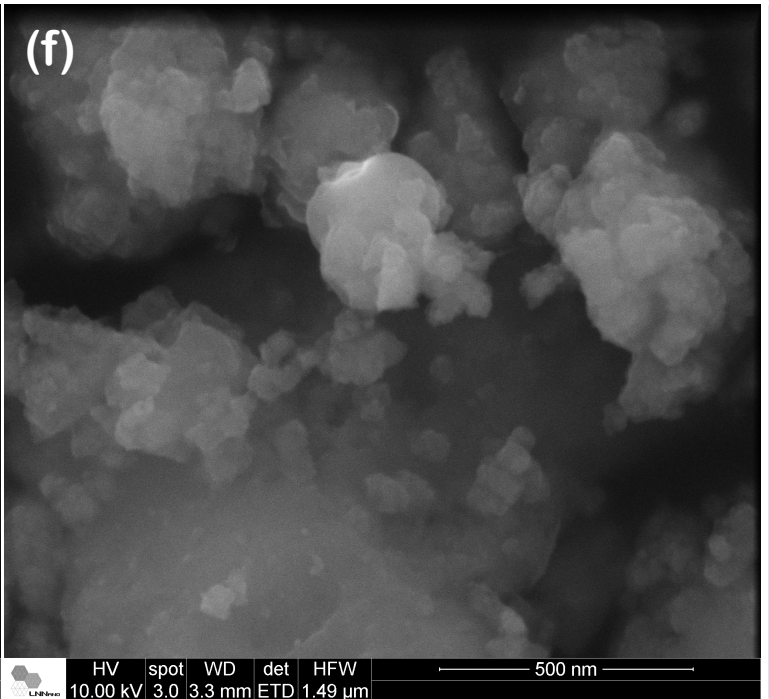
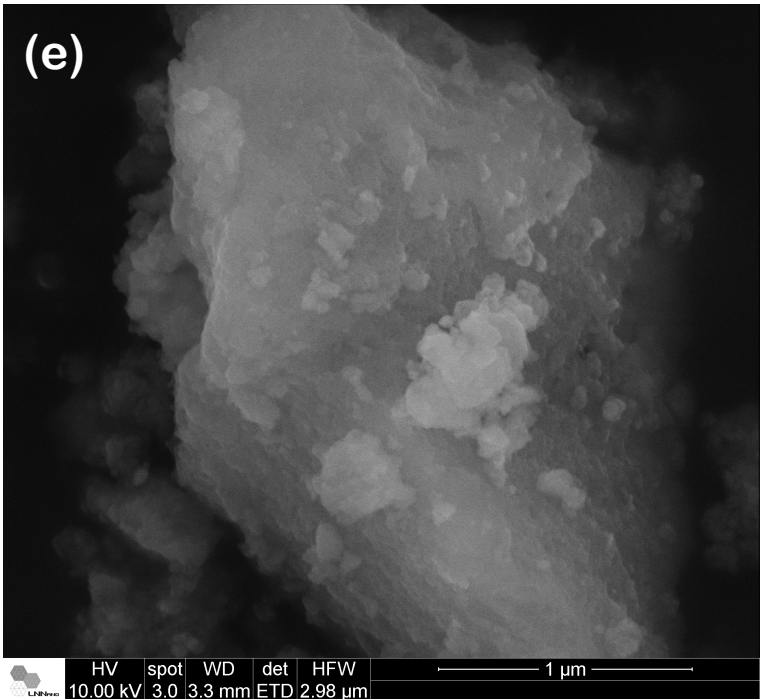


(d)

Molar % - EDS
SiO ₂ - 62,3
CaO - 27,0
P ₂ O ₅ - 2,1
Nb ₂ O ₅ - 8,6



(h)

Molar % - EDS
SiO ₂ - 62,3
CaO - 25,1
P ₂ O ₅ - 2,1
Nb ₂ O ₅ - 8,6
Ga ₂ O ₃ - 1,7