




Review

Interaction of Mitochondrial Calcium and ROS in Neurodegeneration

Artyom Y. Baev ¹, Andrey Y. Vinokurov ², Irina N. Novikova ², Viktor V. Dremin ^{2,3}, Elena V. Potapova ² and Andrey Y. Abramov ^{2,4,*}

¹ Laboratory of Experimental Biophysics, Centre for Advanced Technologies, Tashkent 100174, Uzbekistan; baev.a.yu@gmail.com

² Cell Physiology and Pathology Laboratory, Orel State University, 302026 Orel, Russia; tolmach_88@mail.ru (A.Y.V.); irina.makovik@gmail.com (I.N.N.); v.dremin@oreluniver.ru (V.V.D.); e.potapova@oreluniver.ru (E.V.P.)

³ College of Engineering and Physical Sciences, Aston University, Birmingham B4 7ET, UK

⁴ Department of Clinical and Movement Neurosciences, UCL Queen Square Institute of Neurology, Queen Square, London WC1N 3BG, UK

* Correspondence: a.abramov@ucl.ac.uk; Tel.: +44-2034484062

Abstract: Neurodegenerative disorders are currently incurable devastating diseases which are characterized by the slow and progressive loss of neurons in specific brain regions. Progress in the investigation of the mechanisms of these disorders helped to identify a number of genes associated with familial forms of these diseases and a number of toxins and risk factors which trigger sporadic and toxic forms of these diseases. Recently, some similarities in the mechanisms of neurodegenerative diseases were identified, including the involvement of mitochondria, oxidative stress, and the abnormality of Ca²⁺ signaling in neurons and astrocytes. Thus, mitochondria produce reactive oxygen species during metabolism which play a further role in redox signaling, but this may also act as an additional trigger for abnormal mitochondrial calcium handling, resulting in mitochondrial calcium overload. Combinations of these factors can be the trigger of neuronal cell death in some pathologies. Here, we review the latest literature on the crosstalk of reactive oxygen species and Ca²⁺ in brain mitochondria in physiology and beyond, considering how changes in mitochondrial metabolism or redox signaling can convert this interaction into a pathological event.

Keywords: neurodegeneration; mitochondria; calcium; reactive oxygen species; cell death; permeability transition pore; neuron



Citation: Baev, A.Y.; Vinokurov, A.Y.; Novikova, I.N.; Dremin, V.V.; Potapova, E.V.; Abramov, A.Y. Interaction of Mitochondrial Calcium and ROS in Neurodegeneration. *Cells* **2022**, *11*, 706. <https://doi.org/10.3390/cells11040706>

Academic Editor: Javier Alvarez

Received: 21 January 2022

Accepted: 14 February 2022

Published: 17 February 2022

Publisher's Note: MDPI stays neutral with regard to jurisdictional claims in published maps and institutional affiliations.



Copyright: © 2022 by the authors. Licensee MDPI, Basel, Switzerland. This article is an open access article distributed under the terms and conditions of the Creative Commons Attribution (CC BY) license (<https://creativecommons.org/licenses/by/4.0/>).

1. Introduction

The central nervous system controls most of the bodily functions of higher organisms—behavior, cognition, movement, and many others. Such a variety of functions are regulated by distinguished neuro- and gliotransmitters and modulators and various receptors. Intracellular signaling in neurons and astrocytes as in most cell types is regulated by second messengers including Ca²⁺, which orchestrates almost all processes in the cell [1].

Calcium signaling is a sophisticated process based on the calcium concentration gradients between cytosol and extracellular space and between cytosol and intracellular calcium stores (predominantly the endoplasmic reticulum). Mitochondria play the role of temporary calcium buffer which protects cells against high Ca²⁺ in the cytosol, which at the same time simulates the electron transport chain of mitochondria and ATP production [2]. The mitochondrial calcium uniporter is responsible for fast and electrogenic Ca²⁺ uptake to mitochondria (calcium is transported against the concentration gradient using the electrochemical gradient—mitochondrial membrane potential) [3–5]. Mitochondrial calcium transport is coupled to the accumulation of inorganic phosphate [6,7], and Ca²⁺ and phosphate are stored in form of osmotically inactive precipitates. In the mitochondria

of brain cells, Ca^{2+} is stored mostly in bound form with a bound/free ratio after stimulation of ~ 4000 [8]. Free Ca^{2+} is transported to the cytosol of brain cells by the $\text{Ca}^{2+}/\text{Na}^{+}$ exchanger [9,10], molecularly identified as NCLX (SLC24A6 family) [11] (Figure 1). The balance of the mitochondrial Ca^{2+} is vitally important because an overload of calcium in the matrix of mitochondria leads to the opening of the mitochondrial permeability transition pore (mPTP). Several possible structures of the mPTP with various protein compositions were suggested previously (including ANT, a dimer of F_0F_1 -ATPase, or its subunits), and these are currently the subject of intensive discussion. However, as of now, molecular inhibition has confirmed that only a deficiency in the matrix protein cyclophilin D (CypD) leads to the inhibition of the permeability transition [12]. The process of mPTP opening is an initial step in the release of proapoptotic proteins and the processes of necrotic and apoptotic cell death.

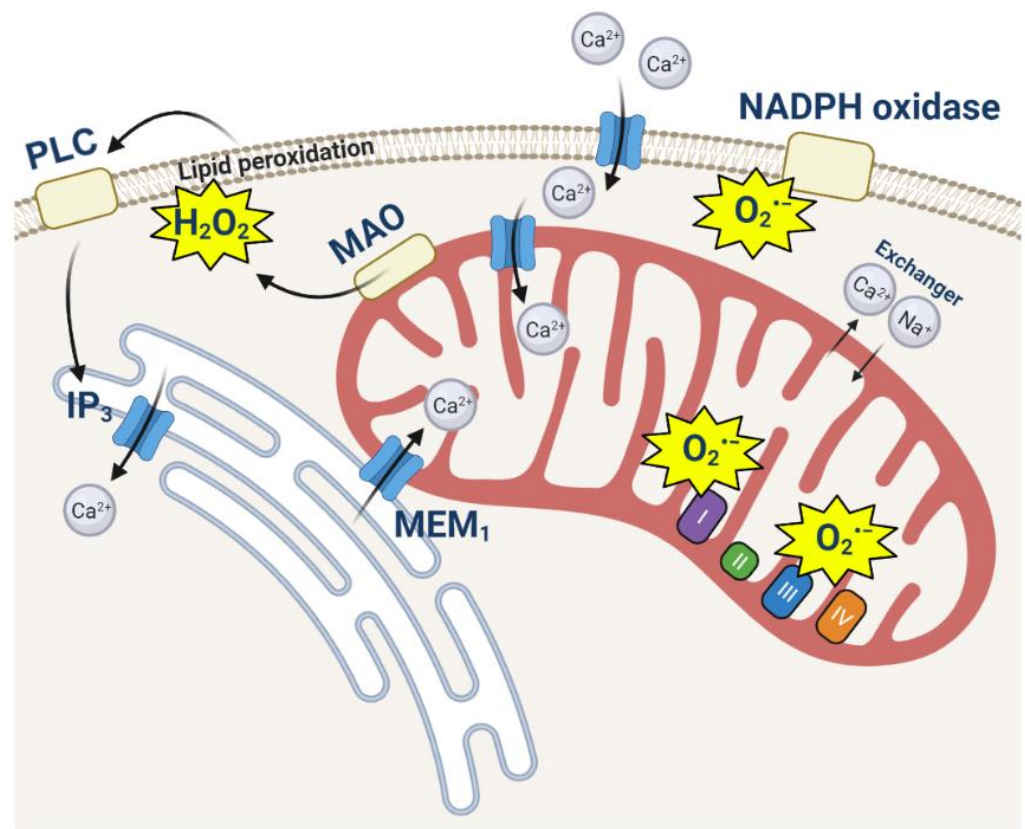


Figure 1. Interaction of calcium and ROS in intracellular signaling. Activation of NADPH oxidase by Ca^{2+} induces ROS production which, in combination with ROS produced in mitochondria or by MAO, can stimulate lipid peroxidation, phospholipase C (PLC) activation, and IP_3 production that lead to an additional calcium signal.

Multiple redox processes in cells adapt to reactive oxygen species and the products of oxidation and play a role in signal transduction [13]. Mitochondria play an important role in redox signaling and produce ROS in several enzymes with the major implication of the electron transport chain, which, in contrast to other mitochondrial and nonmitochondrial enzymes, produces ROS constantly [14,15] (Figure 1). The mitochondrial electron transport chain produces ROS as by-products. This is a consequence of the leak of electrons and the production of ROS (mainly superoxide anion and hydrogen peroxide), which is dependent on the metabolic state, mitochondrial membrane potential etc. Proteins of the mitochondrial matrix—such as the rate-limiting enzymes of the TCA cycle, α -ketoglutarate dehydrogenase or pyruvate dehydrogenase complexes—produce superoxide or hydrogen peroxide independently of the electron transport chain [16] (Figure 1). Importantly, ROS in mitochondria can be produced in enzymes which are not involved in the process of energy

production, including those located on the outer mitochondrial membrane, monoamine oxidase (MAO) and cytochrome b5 reductase (Cb5R); enzymes of the inner mitochondrial membrane, such as glycerol-3-phosphate dehydrogenase; and in some cell types, various cytochrome P450 monooxygenases [15]. Importantly, mitochondria are not only producers of ROS but are also targets. Thus, the overproduction of ROS is shown to be an inductor of mPTP opening, and calcium and ROS are known to be one of the major triggers for cell death [17,18].

Mitochondrial and cytosolic ROS and Ca^{2+} interact, complement, and regulate each other physiologically and pathologically.

ROS can stimulate calcium signaling in neurons and astrocytes. The application of catecholamines (adrenaline or dopamine) to astrocytes induces the production of hydrogen peroxide in monoamine oxidase and stimulates lipid peroxidation and the activation of phospholipase C and IP3-induced calcium signaling [19,20]. Mitochondrial ROS under hypoxic conditions in astrocytes play a signaling role to trigger calcium signaling and a physiological response to hypoxia [21]. Free radicals can modify Ca^{2+} channel activity, which also plays the role of a chemosensor [22].

Ca^{2+} stimulates ROS production from different sources; thus, calcium signaling can trigger the activation of the NADPH oxidases expressed in neurons and astrocytes—NOX2 and NOX4 [23,24]. Mitochondrial calcium uptake induces the activation of dehydrogenases and mitochondrial respiration and the hyperpolarisation of mitochondria [25]. An increase in the mitochondrial membrane potential leads to a higher probability of electron leaks and ROS production in mitochondria [26].

Mitochondrial ROS and calcium have complementary effects on the activation of pathological mechanisms in brain cells. Thus, the high capacity of brain mitochondria to produce complexes of Ca^{2+} with inorganic phosphate can protect abiding neurons against calcium-induced mPTP opening and cell death. However, ROS overproduction in neurons and astrocytes can serve as an additional trigger for pathology via a decrease in the threshold for pore opening.

Mitochondrial calcium overload and ROS overproduction also work complementarily to induce DNA damage and the activation of poly(ADP-ribose) polymerase (PARP)—a family of proteins best known to facilitate DNA base excision repair [27–29], which leads to the production of PAR, energy deprivation, and cell death via a specific mechanism (parthanatos).

Neurodegenerative disorders are devastating and incurable diseases. Despite the significant progress in the understanding of the mechanisms of their pathology in recent decades, the initial triggers of these diseases remain unclear. Although in all of these diseases damage to a different brain area is represented, they all share several pathological features, including the aggregation of misfolded proteins, mitochondrial dysfunction, and oxidative stress [30,31].

2. Huntington's Disease

Huntington's disease (HD) is an autosomal dominant neurodegenerative disease and the most common cause of hereditary chorea. The mutation that leads to the development of HD is the expansion of CAG repeats (encoding glutamine) in exon 1 of the HTT gene, which is responsible for the synthesis of the huntingtin protein [32]. Huntington's disease is characterized by a great phenotypic variety of motor, cognitive, and mental disorders. There is a correlation between the number of CAG repeats and the age of HD debut, as well as the severity of manifestations of the disease. As a result of a specific mutation, the mutant huntingtin protein (mHtt) is able to initiate a cascade of damage to molecular processes, ultimately leading to mitochondrial dysfunction, ROS formation, and increased oxidative stress [33–36]. Mutated huntingtin is shown to be associated with mitochondria, which can explain the effect of this protein on mitochondrial function [37].

The mitochondria of the striatum are the site of the integration of multiple pathological stimuli, including calcium deregulation and ROS production, which lead to the opening

of the mPTP followed by a cascade of subsequent events of cell death [30]. Metabolic and mitochondrial dysfunction in HD results from the deregulation of the mitochondrial calcium efflux that alters intracellular Ca^{2+} homeostasis [38]. It should be noted that disturbances in intracellular Ca^{2+} homeostasis have been reported possibly in all experimental HD models [39,40].

CAG repeat in the huntingtin gene has been shown to induce the overactivation of the NMDA receptor, which leads to an increased calcium influx, profound mitochondrial depolarization, a decrease in ATP synthesis, and excitotoxicity. These conditions are also associated with the activation of NADPH oxidase and ROS production [41–44].

Cytoplasmic Ca^{2+} overload in striatal neurons can lead to the increased production of ROS through the mitochondrial production of superoxide, resulting in cell death [45]. Results obtained using HD mouse model neurons and HD patient fibroblast cells showed that excessive mitochondrial oxidative stress is critically dependent on mitochondrial Ca^{2+} loading in HD cells. The blockade of mitochondrial Ca^{2+} uptake abolishes the increased superoxide formation [46]. Moreover, mitochondrial loading with Ca^{2+} in HD cells caused a 2× higher level of mitochondrial genomic DNA damage due to excessive mitochondrial ROS production.

Mitochondria isolated from cells obtained from both HD patients and HD mouse models are more sensitive to Ca^{2+} loading, i.e., they have a significantly lower threshold required to trigger mPTP opening [47–51].

The decreased mitochondrial calcium threshold in HD mitochondria can be associated with the ability of huntingtin to directly produce free radicals [52].

It has been shown that while mitochondria are unable to withstand high Ca^{2+} loads [53], there is an increased transcription of genes involved in ROS cleavage (Gpx1, catalase, SOD1, and SOD2), indicating that the relation between Ca^{2+} and ROS is the most likely inducer of mitochondrial stress in HD.

It is important to note that other researchers have failed to detect a defect in Ca^{2+} accumulation in mitochondria exposed to mHtt with an elongated polyQ site [54–56]. Differences in the data may be related to the specific model or experimental study protocols in question, as well as the need to consider the role of other mechanisms in HD pathogenesis, such as changes in mitochondrial dynamics [57].

Impaired mitochondrial function and Ca^{2+} homeostasis can be explained by changes in mHtt-induced division regulation. Aberrant Drp1-mediated mitochondrial fragmentation causes mitochondria to move away from the endoplasmic reticulum. The loss of ER–mitochondrial contacts leads to excessive mitochondrial ROS (superoxide) production and decreased mitochondrial Ca^{2+} uptake, causing an aberrant increase in cytosolic Ca^{2+} and, consequently, altered calcium homeostasis [58]. Drp1-mediated mitochondrial fragmentation and increased propensity for apoptosis in HD cells were also observed in [59].

Although the role of the mitochondrial calcium deregulation in HD is proven by a number of publications and there are no doubts about the role of ROS in the pathogenesis of this disease, the nature of the interaction between these processes in the mechanism of neurodegeneration is not clear.

3. Alzheimer's Disease

Alzheimer's disease (AD) is the most common neurodegenerative disorder and is characterized by a very high incidence among the elderly. The presence of mutations in three alternative genes, APP, PSEN1 and PSEN2, and the absence of any specific genetic lesions makes it possible to distinguish between familial and sporadic forms of this disease [60].

The major histopathological features of this disease, first described more than 100 years ago, are extracellular senile plaques (mostly formed by aggregated β -amyloid ($\text{A}\beta$)), intracellular neurofibrillary tangles (formed by tau protein), and the loss of basal forebrain cholinergic neurons [61]. Major studies into Alzheimer's disease are focused on unravelling the effects of different forms of β -amyloid, hyperphosphorylated, and/or aggregated tau;

on transgenic animals with mutations in APP, PSEN1, PSEN2; or on some genes which increase genetic risk of the disease, such as APOE.

β -amyloid is able to produce channels on the membranes [62] that induce calcium signals in astrocytes but not in neurons, due to the higher content of cholesterol [63,64]. Importantly, oligomeric $A\beta$ can induce calcium signals in picomolar concentrations [65] and form pores in the membranes of lysosomes [66]. High calcium signaling induces the activation of NADPH oxidase; mitochondrial calcium uptake [2,67]; and the combination of ROS and calcium in mitochondria, which induces the activation of PARP and mPTP opening [68] (Figure 2). The importance of calcium overload was also demonstrated in transgenic models of AD. Thus, in an APP/PS1 Tg mouse model of cerebral β -amyloidosis, $A\beta$ accumulation provoked mitochondrial Ca^{2+} overload, leading to neuronal death. The inhibition of the MCU by the specific channel blocker Ru360 abolished mitochondrial Ca^{2+} uptake and was protective [69]. The importance of mitochondrial calcium overload and ROS in the pathology of AD was also proven in different mouse models of the disease (which developed both amyloid plaques and neurofibrillary tangles), showing that the loss of NCLX expression and functionality led to the progression of AD by promoting superoxide generation, mitochondrial calcium overload, and neuronal cell death [70]. However, mitochondrial calcium overload and ROS production via the inhibition of NCLX can be induced by the tau protein [71,72] (Figure 2).

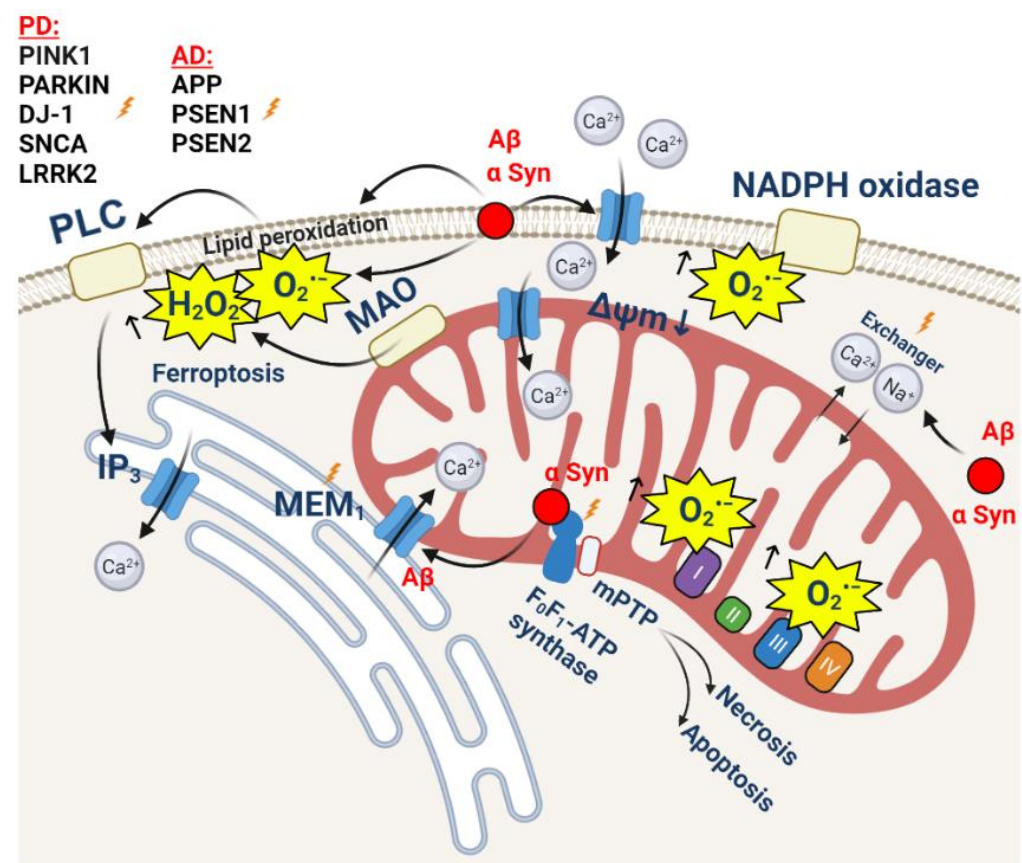


Figure 2. ROS and Ca^{2+} in abnormal calcium signaling leading to cell death in Alzheimer's disease and Parkinson's disease. Aggregated β Amyloid or α -synucleins form calcium-permeable channels on plasma membrane. PD and AD mutations lead to inhibition of NCLX, massive ROS production, and calcium overload in mitochondria.

Interestingly, similar to β -amyloid, presenilins (PS1-M146V and PS2-N141I FAD) can form low-conductance divalent-cation-permeable ion channels in ER that selectively release Ca^{2+} [73]. This increased intracellular Ca^{2+} and led to mitochondrial dysfunction

and apoptosis. However, these results are still disputable and have not been confirmed by other groups [74–76].

ER–mitochondrial contacts are directly associated with mitochondrial calcium uptake. Thus, A β initiates Ca²⁺ release from the ER via IP3Rs or RyRs. Mitochondrial Ca²⁺ overload can be the result of an increase in ER–mitochondria coupling and the transfer of Ca²⁺ from the ER to mitochondria. This has been shown in studies on fibroblasts from AD patients and a neuroblastoma cell line containing a familial presenilin-2 (PS2) AD mutation [77].

The importance of mitochondrial calcium overload in combination with excessive ROS production leading to mPTP opening and cell death was proven in the studies with cyclophilin-D-deficient mice, which exhibited the absence of cognitive decline [78,79] (Figure 2).

The model of A β 42 oligomer-mediated oxidative damage and subsequent neurotoxicity in AD in the work of Butterfield and Halliwell demonstrates the deregulation of calcium homeostasis in this disorder [80]. Studies of an AD brain identified indications of oxidative damage due to the effects of A β oligomers [81]. This damage follows the path of lipid peroxidation, the major and highly reactive product of which is protein-bound 4-hydroxy-2-trans-nonenal. Oxidative dysfunction would have the effect of decreasing the neuronal cell potential and thus opening voltage-gated Ca²⁺ channels (VGCCs). The opening of VGCCs leads to a massive increase in intracellular Ca²⁺ due to the difference in the calcium concentration inside and outside the cell. This can overwhelm intracellular Ca²⁺ stores in the ER and mitochondria. In the case of mitochondria, elevated mitochondrial Ca²⁺ can lead to the opening of the mitochondrial permeability transition pore, with the subsequent release of cytochrome C and induction of apoptosis [82].

4. Parkinson's Disease

Parkinson's disease (PD) is a neurodegenerative pathology associated with the death of dopaminergic neurons in substantia nigra. In the same way as Alzheimer's disease, the histopathological features of PD are intracellular inclusions—Lewy bodies, which mainly consist of aggregated α -synuclein. Mitochondria have been associated with PD ever since the discovery was made that mitochondrial toxins such as rotenone and 1-methyl-4-phenyl-1,2,3,6-tetrahydropyridine (MPTP) cause the death of dopaminergic neurons and permanent symptoms of Parkinson's disease in cellular and animal models [83–86]. Moreover, the discovery of familial forms of PD confirmed the strong association of PD pathology with mitochondria. Thus, mutations in PINK1 and PARKIN (which encode proteins involved in mitophagy), DJ-1 (which encodes redox-sensitive chaperone deglycase DJ-1, inhibiting the aggregation of α -synuclein during oxidative stress), SNCA (which encodes α -synuclein), and LRRK2 (which encodes leucine-rich repeat kinase 2) were all proven to cause the development of PD. The products of these genes have constant or partial co-localization with mitochondria and the dysfunction of these proteins causes mitochondrial damage through high levels of oxidative stress, mitochondrial calcium, and energy deficit [87].

A vast amount of the studies which report on the activity of α -synuclein in various processes are mainly focused on the aggregated toxic proteins. However, monomeric α -synuclein is involved in synaptic transmission [88,89] and can induce calcium signaling in neurons and astrocytes [90] (Figure 2). Recently, we demonstrated that monomeric α -synuclein can directly interact with mitochondrial F₀F₁ ATP synthase and modulate its activity [91]. Oligomeric α -synuclein can also induce calcium signaling in neurons and astrocytes and stimulate ROS production, partially by activating ROS-producing enzymes (including mitochondrial ROS), but mainly by generating superoxide by itself in interaction with metal ions [92]. Mitochondrial Ca²⁺ uptake, together with the binding of oligomeric α -synuclein to the same site of mitochondrial F₀F₁ ATP synthase where monomers bind, produces oxidation of this complex and induces mPTP opening and cell death [93] (Figure 2). Interestingly, the direct contact of oligomeric α -synuclein with lipids from membranes or

other intracellular organelles leads to a profound lipid peroxidation, calcium deregulation, and ferroptosis [94,95].

Additionally to redox changes, oligomeric α -synuclein also inhibits mitochondrial $\text{Na}^+/\text{Ca}^{2+}$ (NCLX) exchanger and leads to calcium overload in the matrix of mitochondria [96]. Importantly, the α -synuclein-associated mutation A53T has been shown to inhibit NCX3 (the plasmalemmal $\text{Na}^+/\text{Ca}^{2+}$ exchanger which is shown to be located on the mitochondrial membranes as well) and induce mitochondrial dysfunction and the loss of striatal neurons [97]. The inhibition of NCLX has been shown for familial forms of PD and was identified for first time in PINK1 deficiency and mutations [98,99], and later in LRRK2 deficiency and overexpression [100,101]. The restoration of mitochondrial Ca^{2+} in models with an overexpression of NCLX or PINK1 has been shown to be protective for PINK1-deficient neurons, LRRK2, and cardiomyocytes in sepsis [100,102,103] (Figure 2). The protection of neurons with inhibited NCLX can also be achieved by the molecular inhibition of the MCU or by the sequestration of calcium uptake by pharmacological compounds [104–106]. In contrast, the inhibition of NCLX by CGP-37157 is shown to be protective against α -synuclein- and rotenone-induced cell death [107], which can be explained by its differences from the calcium overload mechanism, including the ability of CGP-37157 to inhibit some other proteins, such as L-type voltage-dependent Ca^{2+} channels [108]. Considering their low specificity, some forms of calcium antagonists may have limited therapeutic value in PD.

However, mitochondrial calcium overload is not the sole activator of neuronal cell death. Thus, PINK1-deficient neurons induce excessive ROS production in NADPH oxidase and mitochondria, and the additional ROS produced in MAO under the application of dopamine induce mPTP opening and cell death [109].

The overproduction of ROS and mitochondrial calcium overload are also responsible for the activation of poly(ADP-ribose) polymerase-1 (PARP-1), the induction of PAR, and the triggering of cell death. There is a growing body of evidence for the involvement of this pathway in the etiopathology of PD. Thus, the interaction of PAR with phosphorylated α -synuclein was found in post mortem PD samples and a murine model of α -synucleinopathy (M83-SNCA \times A53T) [110]. Toxic forms of α -synuclein directly activate PARP-1, and PAR generation accelerates the formation of pathologic α -synuclein, resulting in cell death via parthanatos [111]. The role of PARP-1 activation in the limitation of mitochondrial substrates and the induction of neurodegeneration was also found in models of familial forms of PD—Fbxo7 [112] and PINK1, where the supplementation of cells with NAD^+ was shown to be protective [113]. A PARP-1 mutation has been shown to be protective against mitochondrial dysfunction and neurodegeneration in a PARKIN model of Parkinson's disease, which also confirms the importance of PARP-1 activation in the mechanism of the neurodegeneration of PD and the role of mitochondrial processes in this activation [114].

5. Frontotemporal Dementia

The term frontotemporal dementia (FTD) refers to a group of neurodegenerative diseases characterized by the degeneration of the frontal and temporal lobes of the brain with an early onset and associated with disorders in behavior, language, and cognition [115,116]. More than 20% of FTD cases belong to familial forms. The mutations of the MAPT gene, which encode the microtubule-associated protein TAU, are the most common mutations associated with FTD [117]. The involvement of the tau protein in the pathogenesis of FTD brings this disorder close to tauopathies—a group of diseases characterized by an abnormal tau profile [118]. However, there are number of genes, including the TDP-43 and FUS proteins, which induce FTD but are also involved in amyotrophic lateral sclerosis. Thus, the loss of function of TDP-43 impairs mitochondria–ER contacts, which induces the alteration of mitochondrial calcium uptake [119].

The cellular metabolism imbalance observed in FTD may be associated with the deregulation of mitochondrial calcium homeostasis and ROS production. Thus, changes in ER–mitochondrial contacts is one of the features of both FTD and ALS, and changes in

these contacts may lead to the changes in mitochondrial Ca^{2+} [120–122] in FTD-associated FUS, TDP-43, and C9orf72.

Aggregates of the recombinant TAU protein P301S can also form a channel in the same way as β -amyloid or α -synuclein [123,124]. However, aggregated tau induces calcium signaling not through these channels but via the activation of voltage-gated Ca^{2+} channels, and activates ROS production in NADPH oxidase [123]. In a human neuronal FTD model with 10 + 16 mutation of MAPT [125], a significant increase in the mitochondrial membrane potential due to the complex V reverse activation was found. As a result, an increase in ROS production, leading to the development of oxidative stress and cell death through the opening of mPTP was shown [125]. On the other hand, excessive mitochondrial ROS production in these neurons damages the proteins responsible for the trafficking of AMPA and NMDA receptors, which leads to changes in calcium signaling and the electric activity of FTD neurons [126,127]. Importantly, neuronal activity in these cells and glutamate-induced calcium signaling was effectively restored by the incubation of these cells with mitochondrial antioxidants but not with general antioxidants or PUFAs. Interestingly, ROS and changes in mitochondrial calcium handling are shown to be responsible for the changes in the expression and function of the glutamate receptors AMPA and NMDA and the corresponding increase in the vulnerability of neurons to excitotoxicity [126,128,129].

It should be noted that the tau protein with the same mutation that leads to FTD induces the inhibition of NCLX in primary neurons and astrocytes, leading to mitochondrial calcium overload and, in combination with high ROS production, inducing mPTP opening, which can explain the toxicity of this form of tau (K18) [72].

6. Amyotrophic Lateral Sclerosis

Amyotrophic lateral sclerosis (ALS) is a rapidly progressing neurodegenerative disease with a predominant degradation of motor neurons and skeletal muscle dystrophy [130]. The most common cause of death, usually within 2–5 years of diagnosis, is respiratory failure [131,132]. About 10% of reported ALS cases are associated with mutations in more than 20 genes, including the genes of Cu/Zn superoxide dismutase (SOD1), fused in sarcoma (FUS), and alsin (Als2) [133,134]. However, despite the different etiology, mitochondrial dysfunction is one of hallmarks of its pathology [135]. Morphological changes (including swelling and fragmentation), an ATP production decrease, and electron transport chain failure was detected by different research groups [136–139]. Mitochondria play an important role in the closely related processes of calcium homeostasis and the production of reactive oxygen species (ROS). The dysregulation of these processes is one of the mechanisms of ALS development [140,141].

Oxidative damage is one of the most important causes of the degradation of both motor neurons and skeletal muscles. Motor neurons have a higher sensitivity to increased ROS production, which was proven in a number of studies. Thus, excessive ROS production leads to excitotoxicity in motor neurons [132–142]. This can be explained by higher levels of the expression of AMPA-receptors with high calcium permeability, due to a lower content of the GluR2 domain [143–145] or due to a mutant SOD1 [146]; it can also be explained by the low expression of calcium-binding cytoplasmic proteins, such as parvalbumin and calbindin D-28k, which leads to the 5-6-fold reduced capacity of the cytosol for calcium [147–150]. Importantly, it can be due to a reduced physiological mitochondrial capacity for calcium, and in the case of the mouse mutant SOD1 model, G93A is shown long before the manifestation of the pathology phenotype. This may be due to the reduced density of the mitochondrial network compared to nonmotor neurons [151,152]. Such a combination of reasons explains the degradation of motor neurons in conditions where other cells retain their functionality [153,154].

After the stimulation of AMPA-receptors with glutamate, the concentration of cytoplasmic calcium increases dramatically, which can lead to delayed calcium deregulation and cell death [155]. The transport of calcium into intracellular depots, mainly into the endoplasmic reticulum (ER) and mitochondria, is one of the ways to reduce cytoplasmic

calcium. Taking into account the low level of calcium-binding proteins, the loading of these organelles with Ca^{2+} increases significantly. A number of studies prove (using mutant SOD1, Sig1R, TDP-43, and FUS) a significant degradation of mitochondria-associated membranes, which play an important role in mitochondrial calcium homeostasis [120,156–158] (Figure 3). However, due to a reduced capacity, the mitochondria of motor neurons reach the calcium threshold much faster compared to control cells. This results in a significant decrease in the mitochondrial membrane potential [159] (Figure 3), and an increase in the rate of the production of mitochondrial ROS and the opening of the mitochondrial permeability transition pore [160] (Figure 3). The induction of oxidative stress affects the surrounding astrocytes, in particular, by reducing the activity of glutamate transporters [154]. Thus, there is a vicious cycle of constant increases in the level of oxidative stress in motor neurons and surrounding astrocytes [161].

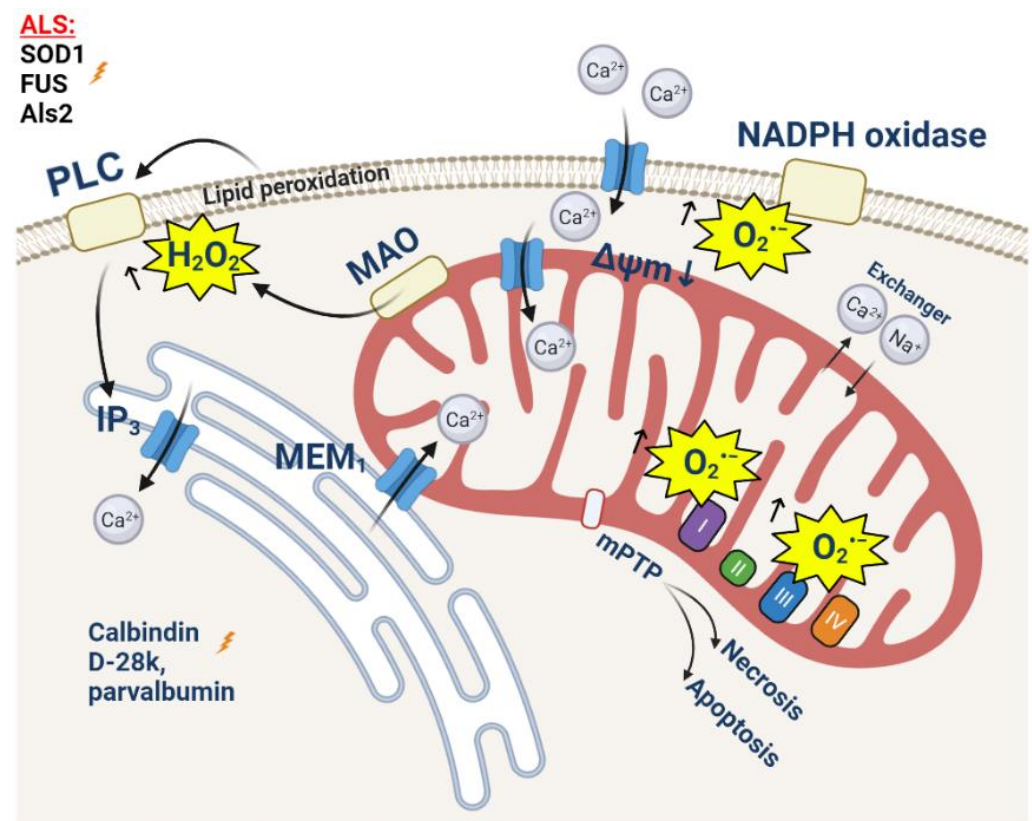


Figure 3. Amyotrophic lateral sclerosis: ROS and calcium in neurons. ALS-associated mutations induce mitochondrial dysfunction and decrease antioxidant defense in mitochondria, altering the MEM and mitochondrial calcium handling.

The mechanism of motor neuron degradation mediated by calcium homeostasis disorders and ROS overproduction is shown in the non-cell-autonomous model of ALS [131]. In this experiment, WT motor neurons were cultivated in astrocyte-conditioned media (ACM) containing toxic products of astrocytes expressing SOD1G93A. An increase in the excitability of neurons due to a higher level of Nav-channel permeability and an increase in the concentration of calcium in the cytosol in mitochondria was shown [131]. This led to a decrease in the mitochondrial membrane potential and an increase in ROS production and the opening of the mPTP. The overproduction of ROS also leads to the phosphorylation of apoptosis-inducing tyrosine kinase (cAbl) [131]. As a result, approximately 50% of motor neurons die within a few days [162–164].

The muscular dystrophy observed in ALS is not solely a consequence of the motor neuron degradation, but can also be explained by additional mechanisms, with the leading role played by calcium homeostasis disorders and oxidative stress [165–167]. The primary

changes are observed in the neuromuscular junctions (NMJ), which, in particular, is shown in the cells of the SOD1G93A model [168]. In muscle fibers, isolated at the age of ALS onset, a significant drop in the mitochondrial membrane potential was shown as a result of an increase in intracellular calcium transient [166,169]. An approximately 14.6% decrease in the calcium uptake of depolarized mitochondria was shown while cytosolic calcium was increased in these cells by 15.6% [170]. This activates the aggregation of mutant proteins (in particular SOD1) in mitochondria and the decrease in the mitochondrial membrane potential, mitochondrial calcium uptake, and activation of ROS production in both mitochondria and the cytosol [135,166,171]. On the other hand, prolonged muscle denervation can lead to an increase in the basal concentration of calcium in the cytosol followed by a mitochondrial calcium overload and ROS overproduction.

7. Conclusions

The similarity of the mechanisms of neurodegeneration of most common neurodegenerative disorders and the involvement in these processes of mitochondrial calcium and ROS production raise the question of whether the path to neuronal cell death is universal; why is neuronal loss so specific to brain regions in various diseases—from the frontotemporal area and cortex to the striatum or motor neurons? This may be explained by the differences in the rates of brain energy metabolism [172], the variability in basal reactive oxygen species production and the level of antioxidants in different brain areas [173], or the variations in neuronal activity [174]. One of the possible explanations could be the specificity of misfolded proteins to certain areas or neuron–glia interaction [175]. It should be noted that the term ROS is too broad and encompasses the toxic species (hydroxyl radical and superoxide anion), while hydrogen peroxide and singlet oxygen may have a positive and even protective effect on neurons [176]. ROS and calcium in mitochondria are contributors to mPTP opening—the final step before the induction of cell death, a mechanism that is universal for all cell types.

Author Contributions: Conceptualization, A.Y.A., A.Y.B., A.Y.V. and V.V.D.; writing—original draft preparation, A.Y.A., E.V.P., A.Y.B., A.Y.V., I.N.N., V.V.D. and E.V.P.; writing—review and editing, A.Y.A., E.V.P., V.V.D. and A.Y.B.; visualization, A.Y.A., E.V.P., A.Y.B. and E.V.P.; supervision, A.Y.A.; project administration, E.V.P. and I.N.N. All authors have read and agreed to the published version of the manuscript.

Funding: This study was supported by the grant of the Russian Federation Government no. 075-15-2019-1877.

Conflicts of Interest: The authors declare no conflict of interest. The funders had no role in the design of the study; in the collection, analyses, or interpretation of data; in the writing of the manuscript, or in the decision to publish the results.

References

1. Berridge, M.J.; Lipp, P.; Bootman, M.D. The Versatility and Universality of Calcium Signalling. *Nat. Rev. Mol. Cell Biol.* **2000**, *1*, 11–21. [[CrossRef](#)] [[PubMed](#)]
2. Abeti, R.; Abramov, A.Y. Mitochondrial Ca²⁺ in Neurodegenerative Disorders. *Pharmacol. Res.* **2015**, *99*, 377–381. [[CrossRef](#)]
3. Saris, N.E.L.; Carafoli, E. A Historical Review of Cellular Calcium Handling, with Emphasis on Mitochondria. *Biochemistry* **2005**, *70*, 187–194. [[CrossRef](#)] [[PubMed](#)]
4. Baughman, J.M.; Perocchi, F.; Girgis, H.S.; Plovanich, M.; Belcher-Timme, C.A.; Sancak, Y.; Bao, X.R.; Strittmatter, L.; Goldberger, O.; Bogorad, R.L.; et al. Integrative Genomics Identifies MCU as an Essential Component of the Mitochondrial Calcium Uniporter. *Nature* **2011**, *476*, 341–345. [[CrossRef](#)]
5. Fan, M.; Zhang, J.; Tsai, C.W.; Orlando, B.J.; Rodriguez, M.; Xu, Y.; Liao, M.; Tsai, M.F.; Feng, L. Structure and Mechanism of the Mitochondrial Ca²⁺ Uniporter Holocomplex. *Nature* **2020**, *582*, 129–133. [[CrossRef](#)] [[PubMed](#)]
6. Zoccarato, F.; Nicholls, D.G. Phosphate-Independent Calcium Efflux from Liver Mitochondria. *FEBS Lett.* **1981**, *128*, 275–277. [[CrossRef](#)]
7. Aprille, J.R. Mechanism and Regulation of the Mitochondrial ATP-Mg/Pi Carrier. *J. Bioenerg. Biomembr.* **1993**, *25*, 473–481. [[CrossRef](#)]

8. Horikawa, Y.; Goel, A.; Somlyo, A.P.; Somlyo, A.V. Mitochondrial Calcium in Relaxed and Tetanized Myocardium. *Biophys. J.* **1998**, *74*, 1579–1590. [[CrossRef](#)]
9. Carafoli, E.; Tiozzo, R.; Lugli, G.; Crovetti, F.; Kratzing, C. The Release of Calcium from Heart Mitochondria by Sodium. *J. Mol. Cell. Cardiol.* **1974**, *6*, 361–371. [[CrossRef](#)]
10. Crompton, M.; Künzi, M.; Carafoli, E. The Calcium-Induced and Sodium-Induced Effluxes of Calcium from Heart Mitochondria. Evidence for a Sodium-Calcium Carrier. *Eur. J. Biochem.* **1977**, *79*, 549–558. [[CrossRef](#)]
11. Palty, R.; Silverman, W.F.; Hershfinkel, M.; Caporale, T.; Sensi, S.L.; Parnis, J.; Nolte, C.; Fishman, D.; Shoshan-Barmatz, V.; Herrmann, S.; et al. NCLX Is an Essential Component of Mitochondrial Na⁺/Ca²⁺ Exchange. *Proc. Natl. Acad. Sci. USA* **2010**, *107*, 436. [[CrossRef](#)] [[PubMed](#)]
12. Baines, C.P.; Kaiser, R.A.; Purcell, N.H.; Blair, N.S.; Osinska, H.; Hambleton, M.A.; Brunskill, E.W.; Sayen, M.R.; Gottlieb, R.A.; Dorn, G.W.; et al. Loss of Cyclophilin D Reveals a Critical Role for Mitochondrial Permeability Transition in Cell Death. *Nature* **2005**, *434*, 658–662. [[CrossRef](#)] [[PubMed](#)]
13. Angelova, P.R. Sources and Triggers of Oxidative Damage in Neurodegeneration. *Free Radic. Biol. Med.* **2021**, *173*, 52–63. [[CrossRef](#)]
14. Turrens, J.F. Mitochondrial Formation of Reactive Oxygen Species. *J. Physiol.* **2003**, *552*, 335–344. [[CrossRef](#)] [[PubMed](#)]
15. Angelova, P.R.; Abramov, A.Y. Functional Role of Mitochondrial Reactive Oxygen Species in Physiology. *Free Radic. Biol. Med.* **2016**, *100*, 81–85. [[CrossRef](#)] [[PubMed](#)]
16. Starkov, A.A.; Fiskum, G.; Chinopoulos, C.; Lorenzo, B.J.; Browne, S.E.; Patel, M.S.; Beal, M.F. Mitochondrial α -Ketoglutarate Dehydrogenase Complex Generates Reactive Oxygen Species. *J. Neurosci.* **2004**, *24*, 7779–7788. [[CrossRef](#)]
17. Angelova, P.R.; Esteras, N.; Abramov, A.Y. Mitochondria and Lipid Peroxidation in the Mechanism of Neurodegeneration: Finding Ways for Prevention. *Med. Res. Rev.* **2021**, *41*, 770–784. [[CrossRef](#)]
18. Bernardi, P.; Carraro, M.; Lippe, G. The Mitochondrial Permeability Transition: Recent Progress and Open Questions. *FEBS J.* **2021**. *online ahead of print.* [[CrossRef](#)]
19. Vaarmann, A.; Gandhi, S.; Abramov, A.Y. Dopamine Induces Ca²⁺ Signaling in Astrocytes through Reactive Oxygen Species Generated by Monoamine Oxidase. *J. Biol. Chem.* **2010**, *285*, 25018. [[CrossRef](#)]
20. Novikova, I.N.; Manole, A.; Zherebtsov, E.A.; Stavtsev, D.D.; Vukolova, M.N.; Dunaev, A.V.; Angelova, P.R.; Abramov, A.Y. Adrenaline Induces Calcium Signal in Astrocytes and Vasoconstriction via Activation of Monoamine Oxidase. *Free Radic. Biol. Med.* **2020**, *159*, 15–22. [[CrossRef](#)]
21. Angelova, P.R.; Kasyrov, V.; Christie, I.; Sheikhabaehi, S.; Turovsky, E.; Marina, N.; Korsak, A.; Zwicker, J.; Teschemacher, A.G.; Ackland, G.L.; et al. Functional Oxygen Sensitivity of Astrocytes. *J. Neurosci.* **2015**, *35*, 10460–10473. [[CrossRef](#)] [[PubMed](#)]
22. Shimizu, S.; Takahashi, N.; Mori, Y. TRPs as Chemosensors (ROS, RNS, RCS, Gasotransmitters). *Handb. Exp. Pharmacol.* **2014**, *223*, 767–794. [[CrossRef](#)]
23. Abramov, A.Y.; Jacobson, J.; Wientjes, F.; Hothersall, J.; Canevari, L.; Duchen, M.R. Expression and Modulation of an NADPH Oxidase in Mammalian Astrocytes. *J. Neurosci.* **2005**, *25*, 9176–9184. [[CrossRef](#)] [[PubMed](#)]
24. Brennan, A.M.; Suh, S.W.; Won, S.J.; Narasimhan, P.; Kauppinen, T.M.; Lee, H.; Edling, Y.; Chan, P.H.; Swanson, R.A. NADPH Oxidase Is the Primary Source of Superoxide Induced by NMDA Receptor Activation. *Nat. Neurosci.* **2009**, *12*, 857–863. [[CrossRef](#)]
25. McCormack, J.G.; Halestrap, A.P.; Denton, R.M. Role of Calcium Ions in Regulation of Mammalian Intramitochondrial Metabolism. *Physiol. Rev.* **1990**, *70*, 391–425. [[CrossRef](#)] [[PubMed](#)]
26. Korshunov, S.S.; Skulachev, V.P.; Starkov, A.A. High Protonic Potential Actuates a Mechanism of Production of Reactive Oxygen Species in Mitochondria. *FEBS Lett.* **1997**, *416*, 15–18. [[CrossRef](#)]
27. Fatokun, A.A.; Dawson, V.L.; Dawson, T.M. Parthanatos: Mitochondrial-Linked Mechanisms and Therapeutic Opportunities. *Br. J. Pharmacol.* **2014**, *171*, 2000–2016. [[CrossRef](#)] [[PubMed](#)]
28. Baxter, P.; Chen, Y.; Xu, Y.; Swanson, R.A. Mitochondrial Dysfunction Induced by Nuclear Poly(ADP-Ribose) Polymerase-1: A Treatable Cause of Cell Death in Stroke. *Transl. Stroke Res.* **2014**, *5*, 136–144. [[CrossRef](#)]
29. Abramov, A.Y.; Duchen, M.R. Mechanisms Underlying the Loss of Mitochondrial Membrane Potential in Glutamate Excitotoxicity. *Biochim. Biophys. Acta-Bioenerg.* **2008**, *1777*, 953–964. [[CrossRef](#)]
30. Abramov, A.Y.; Berezhnov, A.V.; Fedotova, E.I.; Zinchenko, V.P.; Dolgacheva, L.P. Interaction of Misfolded Proteins and Mitochondria in Neurodegenerative Disorders. *Biochem. Soc. Trans.* **2017**, *45*, 1025–1033. [[CrossRef](#)]
31. Abramov, A.Y.; Potapova, E.V.; Dremine, V.V.; Dunaev, A.V. Interaction of Oxidative Stress and Misfolded Proteins in the Mechanism of Neurodegeneration. *Life* **2020**, *10*, 101. [[CrossRef](#)]
32. MacDonald, M.E.; Ambrose, C.M.; Duyao, M.P.; Myers, R.H.; Lin, C.; Srinidhi, L.; Barnes, G.; Taylor, S.A.; James, M.; Groot, N.; et al. A Novel Gene Containing a Trinucleotide Repeat That Is Expanded and Unstable on Huntington's Disease Chromosomes. *Cell* **1993**, *72*, 971–983. [[CrossRef](#)]
33. Kumar, A.; Ratan, R.R. Oxidative Stress and Huntington's Disease: The Good, The Bad, and The Ugly. *J. Huntingt. Dis.* **2016**, *5*, 217–237. [[CrossRef](#)] [[PubMed](#)]
34. Zheng, J.; Winderickx, J.; Franssens, V.; Liu, B. A Mitochondria-Associated Oxidative Stress Perspective on Huntington's Disease. *Front. Mol. Neurosci.* **2018**, *11*, 329. [[CrossRef](#)] [[PubMed](#)]
35. Carmo, C.; Naia, L.; Lopes, C.; Rego, A.C. Mitochondrial Dysfunction in Huntington's Disease. *Adv. Exp. Med. Biol.* **2018**, *1049*, 59–83. [[CrossRef](#)] [[PubMed](#)]

36. Ghosh, R.; Wood-Kaczmar, A.; Dobson, L.; Smith, E.J.; Sirinathsinghji, E.C.; Kriston-Vizi, J.; Hargreaves, I.P.; Heaton, R.; Herrmann, F.; Abramov, A.Y.; et al. Expression of Mutant Exon 1 Huntingtin Fragments in Human Neural Stem Cells and Neurons Causes Inclusion Formation and Mitochondrial Dysfunction. *FASEB J.* **2020**, *34*, 8139–8154. [[CrossRef](#)]
37. Orr, A.L.; Li, S.; Wang, C.E.; Li, H.; Wang, J.; Rong, J.; Xu, X.; Mastroberardino, P.G.; Greenamyre, J.T.; Li, X.J. N-Terminal Mutant Huntingtin Associates with Mitochondria and Impairs Mitochondrial Trafficking. *J. Neurosci.* **2008**, *28*, 2783–2792. [[CrossRef](#)]
38. Jadia, P.; Garbincius, J.F.; Elrod, J.W. Reappraisal of Metabolic Dysfunction in Neurodegeneration: Focus on Mitochondrial Function and Calcium Signaling. *Acta Neuropathol. Commun.* **2021**, *9*, 124. [[CrossRef](#)]
39. Giacomello, M.; Oliveros, J.C.; Naranjo, J.R.; Carafoli, E. Neuronal Ca²⁺ Dyshomeostasis in Huntington Disease. *Prion* **2013**, *7*, 76. [[CrossRef](#)]
40. Damiano, M.; Galvan, L.; Déglon, N.; Brouillet, E. Mitochondria in Huntington's Disease. *Biochim. Biophys. Acta* **2010**, *1802*, 52–61. [[CrossRef](#)]
41. Zeron, M.M.; Fernandes, H.B.; Krebs, C.; Shehadeh, J.; Wellington, C.L.; Leavitt, B.R.; Baimbridge, K.G.; Hayden, M.R.; Raymond, L.A. Potentiation of NMDA Receptor-Mediated Excitotoxicity Linked with Intrinsic Apoptotic Pathway in YAC Transgenic Mouse Model of Huntington's Disease. *Mol. Cell. Neurosci.* **2004**, *25*, 469–479. [[CrossRef](#)] [[PubMed](#)]
42. Levine, M.S.; Klapstein, G.J.; Koppel, A.; Gruen, E.; Cepeda, C.; Vargas, M.E.; Jokel, E.S.; Carpenter, E.M.; Zanjani, H.; Hurst, R.S.; et al. Enhanced Sensitivity to N-Methyl-D-Aspartate Receptor Activation in Transgenic and Knockin Mouse Models of Huntington's Disease. *J. Neurosci. Res.* **1999**, *58*, 515–532. [[CrossRef](#)]
43. Gines, S.; Ivanova, E.; Seong, I.S.; Saura, C.A.; MacDonald, M.E. Enhanced Akt Signaling Is an Early Pro-Survival Response That Reflects N-Methyl-D-Aspartate Receptor Activation in Huntington's Disease Knock-in Striatal Cells. *J. Biol. Chem.* **2003**, *278*, 50514–50522. [[CrossRef](#)] [[PubMed](#)]
44. Mattson, M.R. Calcium and Neurodegeneration. *Aging Cell* **2007**, *6*, 337–350. [[CrossRef](#)]
45. Petersén, Å.; Castilho, R.F.; Hansson, O.; Wieloch, T.; Brundin, P. Oxidative Stress, Mitochondrial Permeability Transition and Activation of Caspases in Calcium Ionophore A23187-Induced Death of Cultured Striatal Neurons. *Brain Res.* **2000**, *857*, 20–29. [[CrossRef](#)]
46. Wang, J.Q.; Chen, Q.; Wang, X.; Wang, Q.C.; Wang, Y.; Cheng, H.P.; Guo, C.; Sun, Q.; Chen, Q.; Tang, T.S. Dysregulation of Mitochondrial Calcium Signaling and Superoxide Flashes Cause Mitochondrial Genomic DNA Damage in Huntington Disease. *J. Biol. Chem.* **2013**, *288*, 3070–3084. [[CrossRef](#)]
47. Panov, A.V.; Gutekunst, C.A.; Leavitt, B.R.; Hayden, M.R.; Burke, J.R.; Strittmatter, W.J.; Greenamyre, J.T. Early Mitochondrial Calcium Defects in Huntington's Disease Are a Direct Effect of Polyglutamines. *Nat. Neurosci.* **2002**, *5*, 731–736. [[CrossRef](#)]
48. Choo, Y.S.; Johnson, G.V.W.; MacDonald, M.; Detloff, P.J.; Lesort, M. Mutant Huntingtin Directly Increases Susceptibility of Mitochondria to the Calcium-Induced Permeability Transition and Cytochrome c Release. *Hum. Mol. Genet.* **2004**, *13*, 1407–1420. [[CrossRef](#)]
49. Milakovic, T.; Quintanilla, R.A.; Johnson, G.V.W. Mutant Huntingtin Expression Induces Mitochondrial Calcium Handling Defects in Clonal Striatal Cells: Functional Consequences. *J. Biol. Chem.* **2006**, *281*, 34785–34795. [[CrossRef](#)]
50. Gizatullina, Z.Z.; Lindenberg, K.S.; Harjes, P.; Chen, Y.; Kosinski, C.M.; Landwehrmeyer, B.G.; Ludolph, A.C.; Striggow, F.; Zierz, S.; Gellerich, F.N. Low Stability of Huntington Muscle Mitochondria against Ca²⁺ in R6/2 Mice. *Ann. Neurol.* **2006**, *59*, 407–411. [[CrossRef](#)]
51. Gellerich, F.N.; Gizatullina, Z.; Nguyen, H.P.; Trumbeckaite, S.; Vielhaber, S.; Seppet, E.; Zierz, S.; Landwehrmeyer, B.; Riess, O.; Von Hörsten, S.; et al. Impaired Regulation of Brain Mitochondria by Extramitochondrial Ca²⁺ in Transgenic Huntington Disease Rats. *J. Biol. Chem.* **2008**, *283*, 30715–30724. [[CrossRef](#)] [[PubMed](#)]
52. Hands, S.; Sajjad, M.U.; Newton, M.J.; Wyttenbach, A. In Vitro and in Vivo Aggregation of a Fragment of Huntingtin Protein Directly Causes Free Radical Production. *J. Biol. Chem.* **2011**, *286*, 44512–44520. [[CrossRef](#)] [[PubMed](#)]
53. Lim, D.; Fedrizzi, L.; Tartari, M.; Zuccato, C.; Cattaneo, E.; Brini, M.; Carafoli, E. Calcium Homeostasis and Mitochondrial Dysfunction in Striatal Neurons of Huntington Disease. *J. Biol. Chem.* **2008**, *283*, 5780–5789. [[CrossRef](#)] [[PubMed](#)]
54. Oliveira, J.M.A.; Jakobsons, M.B.; Chen, S.; Lin, A.; Rego, A.C.; Gonçalves, J.; Ellerby, L.M.; Nicholls, D.G. Mitochondrial Dysfunction in Huntington's Disease: The Bioenergetics of Isolated and in Situ Mitochondria from Transgenic Mice. *J. Neurochem.* **2007**, *101*, 241–249. [[CrossRef](#)]
55. Brustovetsky, N.; LaFrance, R.; Purl, K.J.; Brustovetsky, T.; Keene, C.D.; Low, W.C.; Dubinsky, J.M. Age-Dependent Changes in the Calcium Sensitivity of Striatal Mitochondria in Mouse Models of Huntington's Disease. *J. Neurochem.* **2005**, *93*, 1361–1370. [[CrossRef](#)]
56. De Mario, A.; Scarlatti, C.; Costiniti, V.; Primerano, S.; Lopreiato, R.; Calì, T.; Brini, M.; Giacomello, M.; Carafoli, E. Calcium Handling by Endoplasmic Reticulum and Mitochondria in a Cell Model of Huntington's Disease. *PLoS Curr.* **2016**, *8*. [[CrossRef](#)]
57. Brustovetsky, N. Mutant Huntingtin and Elusive Defects in Oxidative Metabolism and Mitochondrial Calcium Handling. *Mol. Neurobiol.* **2016**, *53*, 2944–2953. [[CrossRef](#)]
58. Cherubini, M.; Lopez-Molina, L.; Gines, S. Mitochondrial Fission in Huntington's Disease Mouse Striatum Disrupts ER-Mitochondria Contacts Leading to Disturbances in Ca²⁺ Efflux and Reactive Oxygen Species (ROS) Homeostasis. *Neurobiol. Dis.* **2020**, *136*, 104741. [[CrossRef](#)]

59. Costa, V.; Giacomello, M.; Hudec, R.; Lopreiato, R.; Ermak, G.; Lim, D.; Malorni, W.; Davies, K.J.A.; Carafoli, E.; Scorrano, L. Mitochondrial Fission and Cristae Disruption Increase the Response of Cell Models of Huntington's Disease to Apoptotic Stimuli. *EMBO Mol. Med.* **2010**, *2*, 490–503. [[CrossRef](#)]
60. Hardy, J.; Hardy, C.J.; Lila, R. The Discovery of Alzheimer-Causing Mutations in the APP Gene and the Formulation of the "Amyloid Cascade Hypothesis". *FEBS J.* **2017**, *284*, 1040–1044. [[CrossRef](#)]
61. Hardy, J.; Selkoe, D.J. The Amyloid Hypothesis of Alzheimer's Disease: Progress and Problems on the Road to Therapeutics. *Science* **2002**, *297*, 353–356. [[CrossRef](#)] [[PubMed](#)]
62. Arispe, N.; Rojas, E.; Pollard, H.B. Alzheimer Disease Amyloid Beta Protein Forms Calcium Channels in Bilayer Membranes: Blockade by Tromethamine and Aluminum. *Proc. Natl. Acad. Sci. USA* **1993**, *90*, 567–571. [[CrossRef](#)] [[PubMed](#)]
63. Abramov, A.Y.; Canevari, L.; Duchen, M.R. Changes in Intracellular Calcium and Glutathione in Astrocytes as the Primary Mechanism of Amyloid Neurotoxicity. *J. Neurosci.* **2003**, *23*, 5088–5095. [[CrossRef](#)] [[PubMed](#)]
64. Abramov, A.Y.; Ionov, M.; Pavlov, E.; Duchen, M.R. Membrane Cholesterol Content Plays a Key Role in the Neurotoxicity of β -Amyloid: Implications for Alzheimer's Disease. *Aging Cell* **2011**, *10*, 595–603. [[CrossRef](#)]
65. Narayan, P.; Holmström, K.M.; Kim, D.H.; Whitcomb, D.J.; Wilson, M.R.; St. George-Hyslop, P.; Wood, N.W.; Dobson, C.M.; Cho, K.; Abramov, A.Y.; et al. Rare Individual Amyloid- β Oligomers Act on Astrocytes to Initiate Neuronal Damage. *Biochemistry* **2014**, *53*, 2442–2453. [[CrossRef](#)]
66. Zaretsky, D.V.; Zaretskaia, M.V. Intracellular Ion Changes Induced by the Exposure to Beta-Amyloid Can Be Explained by the Formation of Channels in the Lysosomal Membranes. *Biochim. Biophys. Acta-Mol. Cell Res.* **2022**, *1869*, 119145. [[CrossRef](#)]
67. Abramov, A.Y.; Canevari, L.; Duchen, M.R. β -Amyloid Peptides Induce Mitochondrial Dysfunction and Oxidative Stress in Astrocytes and Death of Neurons through Activation of NADPH Oxidase. *J. Neurosci.* **2004**, *24*, 565–575. [[CrossRef](#)]
68. Abeti, R.; Abramov, A.Y.; Duchen, M.R. β -Amyloid Activates PARP Causing Astrocytic Metabolic Failure and Neuronal Death. *Brain* **2011**, *134*, 1658–1672. [[CrossRef](#)]
69. Calvo-Rodriguez, M.; Hou, S.S.; Snyder, A.C.; Kharitonova, E.K.; Russ, A.N.; Das, S.; Fan, Z.; Muzikansky, A.; Garcia-Alloza, M.; Serrano-Pozo, A.; et al. Increased Mitochondrial Calcium Levels Associated with Neuronal Death in a Mouse Model of Alzheimer's Disease. *Nat. Commun.* **2020**, *11*, 1–17. [[CrossRef](#)]
70. Jadiya, P.; Kolmetzky, D.W.; Tomar, D.; Di Meco, A.; Lombardi, A.A.; Lambert, J.P.; Luongo, T.S.; Ludtmann, M.H.; Praticò, D.; Elrod, J.W. Impaired Mitochondrial Calcium Efflux Contributes to Disease Progression in Models of Alzheimer's Disease. *Nat. Commun.* **2019**, *10*, 1–14. [[CrossRef](#)]
71. Esteras, N.; Abramov, A.Y. Mitochondrial Calcium Deregulation in the Mechanism of Beta-Amyloid and Tau Pathology. *Cells* **2020**, *9*, 2135. [[CrossRef](#)]
72. Britti, E.; Ros, J.; Esteras, N.; Abramov, A.Y. Tau Inhibits Mitochondrial Calcium Efflux and Makes Neurons Vulnerable to Calcium-Induced Cell Death. *Cell Calcium* **2020**, *86*, 102150. [[CrossRef](#)] [[PubMed](#)]
73. Tu, H.; Nelson, O.; Bezprozvanny, A.; Wang, Z.; Lee, S.F.; Hao, Y.H.; Serneels, L.; De Strooper, B.; Yu, G.; Bezprozvanny, I. Presenilins Form ER Ca^{2+} Leak Channels, a Function Disrupted by Familial Alzheimer's Disease-Linked Mutations. *Cell* **2006**, *126*, 981–993. [[CrossRef](#)]
74. Cheung, K.H.; Shineman, D.; Müller, M.; Cárdenas, C.; Mei, L.; Yang, J.; Tomita, T.; Iwatsubo, T.; Lee, V.M.Y.; Foskett, J.K. Mechanism of Ca^{2+} Disruption in Alzheimer's Disease by Presenilin Regulation of InsP3 Receptor Channel Gating. *Neuron* **2008**, *58*, 871–883. [[CrossRef](#)] [[PubMed](#)]
75. Zatti, G.; Burgo, A.; Giacomello, M.; Barbiero, L.; Ghidoni, R.; Sinigaglia, G.; Florean, C.; Bagnoli, S.; Binetti, G.; Sorbi, S.; et al. Presenilin Mutations Linked to Familial Alzheimer's Disease Reduce Endoplasmic Reticulum and Golgi Apparatus Calcium Levels. *Cell Calcium* **2006**, *39*, 539–550. [[CrossRef](#)] [[PubMed](#)]
76. Shilling, D.; Mak, D.O.D.; Kang, D.E.; Foskett, J.K. Lack of Evidence for Presenilins as Endoplasmic Reticulum Ca^{2+} Leak Channels. *J. Biol. Chem.* **2012**, *287*, 10933–10944. [[CrossRef](#)]
77. Hedskog, L.; Pinho, C.M.; Filadi, R.; Rönnbäck, A.; Hertwig, L.; Wiehager, B.; Larssen, P.; Gellhaar, S.; Sandebring, A.; Westerlund, M.; et al. Modulation of the Endoplasmic Reticulum-Mitochondria Interface in Alzheimer's Disease and Related Models. *Proc. Natl. Acad. Sci. USA* **2013**, *110*, 7916–7921. [[CrossRef](#)]
78. Du, H.; Guo, L.; Fang, F.; Chen, D.; Sosunov, A.A.; McKhann, G.M.; Yan, Y.; Wang, C.; Zhang, H.; Molkentin, J.D.; et al. Cyclophilin D Deficiency Attenuates Mitochondrial and Neuronal Perturbation and Ameliorates Learning and Memory in Alzheimer's Disease. *Nat. Med.* **2008**, *14*, 1097–1105. [[CrossRef](#)]
79. Gauba, E.; Chen, H.; Guo, L.; Du, H. Cyclophilin D Deficiency Attenuates Mitochondrial F1Fo ATP Synthase Dysfunction via OSCP in Alzheimer's Disease. *Neurobiol. Dis.* **2019**, *121*, 138–147. [[CrossRef](#)]
80. Butterfield, D.A.; Halliwell, B. Oxidative Stress, Dysfunctional Glucose Metabolism and Alzheimer Disease. *Nat. Rev. Neurosci.* **2019**, *20*, 148–160. [[CrossRef](#)]
81. Butterfield, D.A.; Drake, J.; Pocernich, C.; Castegna, A. Evidence of Oxidative Damage in Alzheimer's Disease Brain: Central Role for Amyloid β -Peptide. *Trends Mol. Med.* **2001**, *7*, 548–554. [[CrossRef](#)]
82. Butterfield, D.A. Brain Lipid Peroxidation and Alzheimer Disease: Synergy between the Butterfield and Mattson Laboratories. *Ageing Res. Rev.* **2020**, *64*, 101049. [[CrossRef](#)] [[PubMed](#)]
83. William Langston, J.; Ballard, P.; Tetrud, J.W.; Irwin, I. Chronic Parkinsonism in Humans Due to a Product of Meperidine-Analog Synthesis. *Science* **1983**, *219*, 979–980. [[CrossRef](#)] [[PubMed](#)]

84. Heikkilä, R.E.; Hess, A.; Duvoisin, R.C. Dopaminergic Neurotoxicity of 1-Methyl-4-Phenyl-1,2,5,6-Tetrahydropyridine in Mice. *Science* **1984**, *224*, 1451–1453. [[CrossRef](#)]
85. Singer, T.P.; Ramsay, R.R. Mechanism of the Neurotoxicity of MPTP. *FEBS Lett.* **1990**, *274*, 1–8. [[CrossRef](#)]
86. Schapira, A.H.V.; Cooper, J.M.; Dexter, D.; Jenner, P.; Clark, J.B.; Marsden, C.D. Mitochondrial Complex I Deficiency in Parkinson's Disease. *Lancet* **1989**, *1*, 1269. [[CrossRef](#)]
87. Abou-Sleiman, P.M.; Muqit, M.M.K.; Wood, N.W. Expanding Insights of Mitochondrial Dysfunction in Parkinson's Disease. *Nat. Rev. Neurosci.* **2006**, *7*, 207–219. [[CrossRef](#)]
88. Burré, J.; Sharma, M.; Tsetsenis, T.; Buchman, V.; Etherton, M.R.; Südhof, T.C. Alpha-Synuclein Promotes SNARE-Complex Assembly in Vivo and in Vitro. *Science* **2010**, *329*, 1663–1667. [[CrossRef](#)]
89. Vargas, K.J.; Makani, S.; Davis, T.; Westphal, C.H.; Castillo, P.E.; Chandra, S.S. Synucleins Regulate the Kinetics of Synaptic Vesicle Endocytosis. *J. Neurosci.* **2014**, *34*, 9364–9376. [[CrossRef](#)]
90. Angelova, P.R.; Ludtmann, M.H.R.; Horrocks, M.H.; Negoda, A.; Cremades, N.; Klenerman, D.; Dobson, C.M.; Wood, N.W.; Pavlov, E.V.; Gandhi, S.; et al. Ca²⁺ Is a Key Factor in α -Synuclein-Induced Neurotoxicity. *J. Cell Sci.* **2016**, *129*, 1792–1801. [[CrossRef](#)]
91. Ludtmann, M.H.R.; Angelova, P.R.; Ninkina, N.N.; Gandhi, S.; Buchman, V.L.; Abramov, A.Y. Monomeric Alpha-Synuclein Exerts a Physiological Role on Brain ATP Synthase. *J. Neurosci.* **2016**, *36*, 10510–10521. [[CrossRef](#)] [[PubMed](#)]
92. Deas, E.; Cremades, N.; Angelova, P.R.; Ludtmann, M.H.R.; Yao, Z.; Chen, S.; Horrocks, M.H.; Banushi, B.; Little, D.; Devine, M.J.; et al. Alpha-Synuclein Oligomers Interact with Metal Ions to Induce Oxidative Stress and Neuronal Death in Parkinson's Disease. *Antioxid. Redox Signal.* **2016**, *24*, 376–391. [[CrossRef](#)] [[PubMed](#)]
93. Ludtmann, M.H.R.; Angelova, P.R.; Horrocks, M.H.; Choi, M.L.; Rodrigues, M.; Baev, A.Y.; Berezhnov, A.V.; Yao, Z.; Little, D.; Banushi, B.; et al. α -Synuclein Oligomers Interact with ATP Synthase and Open the Permeability Transition Pore in Parkinson's Disease. *Nat. Commun.* **2018**, *9*, 1–16. [[CrossRef](#)] [[PubMed](#)]
94. Angelova, P.R.; Choi, M.L.; Berezhnov, A.V.; Horrocks, M.H.; Hughes, C.D.; De, S.; Rodrigues, M.; Yapom, R.; Little, D.; Dolt, K.S.; et al. Alpha Synuclein Aggregation Drives Ferroptosis: An Interplay of Iron, Calcium and Lipid Peroxidation. *Cell Death Differ.* **2020**, *27*, 2781–2796. [[CrossRef](#)]
95. Angelova, P.R.; Horrocks, M.H.; Klenerman, D.; Gandhi, S.; Abramov, A.Y.; Shchepinov, M.S. Lipid Peroxidation Is Essential for α -Synuclein-Induced Cell Death. *J. Neurochem.* **2015**, *133*, 582–589. [[CrossRef](#)]
96. Ludtmann, M.H.R.; Abramov, A.Y. Mitochondrial Calcium Imbalance in Parkinson's Disease. *Neurosci. Lett.* **2018**, *663*, 86–90. [[CrossRef](#)]
97. Di Martino, R.; Sisalli, M.J.; Sirabella, R.; Notte, S.D.; Borzacchiello, D.; Feliciello, A.; Annunziato, L.; Scorziello, A. Ncx3-Induced Mitochondrial Dysfunction in Midbrain Leads to Neuroinflammation in Striatum of A53t- α -Synuclein Transgenic Old Mice. *Int. J. Mol. Sci.* **2021**, *22*, 8177. [[CrossRef](#)]
98. Gandhi, S.; Wood-Kaczmar, A.; Yao, Z.; Plun-Favreau, H.; Deas, E.; Klupsch, K.; Downward, J.; Latchman, D.S.; Tabrizi, S.J.; Wood, N.W.; et al. PINK1-Associated Parkinson's Disease Is Caused by Neuronal Vulnerability to Calcium-Induced Cell Death. *Mol. Cell* **2009**, *33*, 627–638. [[CrossRef](#)]
99. Abramov, A.Y.; Gegg, M.; Grunewald, A.; Wood, N.W.; Klein, C.; Schapira, A.H.V. Bioenergetic Consequences of PINK1 Mutations in Parkinson Disease. *PLoS ONE* **2011**, *6*, e25622. [[CrossRef](#)]
100. Ludtmann, M.H.R.; Kostic, M.; Horne, A.; Gandhi, S.; Sekler, I.; Abramov, A.Y. LRRK2 Deficiency Induced Mitochondrial Ca²⁺ Efflux Inhibition Can Be Rescued by Na⁺/Ca²⁺/Li⁺ Exchanger Upregulation. *Cell Death Dis.* **2019**, *10*, 1–10. [[CrossRef](#)]
101. Verma, M.; Callio, J.; Anthony Otero, P.; Sekler, I.; Wills, Z.P.; Chu, C.T. Mitochondrial Calcium Dysregulation Contributes to Dendrite Degeneration Mediated by PD/LBD-Associated LRRK2 Mutants. *J. Neurosci.* **2017**, *37*, 11151–11165. [[CrossRef](#)]
102. Zhou, Q.; Xie, M.; Zhu, J.; Yi, Q.; Tan, B.; Li, Y.; Ye, L.; Zhang, X.; Zhang, Y.; Tian, J.; et al. PINK1 Contained in HuMSC-Derived Exosomes Prevents Cardiomyocyte Mitochondrial Calcium Overload in Sepsis via Recovery of Mitochondrial Ca²⁺ Efflux. *Stem Cell Res. Ther.* **2021**, *12*, 1–14. [[CrossRef](#)] [[PubMed](#)]
103. Kostic, M.; Ludtmann, M.H.R.; Bading, H.; Hershfinkel, M.; Steer, E.; Chu, C.T.; Abramov, A.Y.; Sekler, I. PKA Phosphorylation of NCLX Reverses Mitochondrial Calcium Overload and Depolarization, Promoting Survival of PINK1-Deficient Dopaminergic Neurons. *Cell Rep.* **2015**, *13*, 376–386. [[CrossRef](#)] [[PubMed](#)]
104. Angelova, P.R.; Vinogradova, D.; Neganova, M.E.; Serkova, T.P.; Sokolov, V.V.; Bachurin, S.O.; Shevtsova, E.F.; Abramov, A.Y. Pharmacological Sequestration of Mitochondrial Calcium Uptake Protects Neurons against Glutamate Excitotoxicity. *Mol. Neurobiol.* **2019**, *56*, 2244–2255. [[CrossRef](#)] [[PubMed](#)]
105. Soman, S.K.; Bazała, M.; Keatinge, M.; Bandmann, O.; Kuznicki, J. Restriction of Mitochondrial Calcium Overload by *mcu* Inactivation Renders a Neuroprotective Effect in Zebrafish Models of Parkinson's Disease. *Biol. Open* **2019**, *8*, bio044347. [[CrossRef](#)] [[PubMed](#)]
106. Soman, S.; Keatinge, M.; Moein, M.; Da Costa, M.; Mortiboys, H.; Skupin, A.; Sugunan, S.; Bazała, M.; Kuznicki, J.; Bandmann, O. Inhibition of the Mitochondrial Calcium Uniporter Rescues Dopaminergic Neurons in *Pink1*^{-/-} Zebrafish. *Eur. J. Neurosci.* **2017**, *45*, 528–535. [[CrossRef](#)] [[PubMed](#)]
107. Bastioli, G.; Piccirillo, S.; Castaldo, P.; Magi, S.; Tozzi, A.; Amoroso, S.; Calabresi, P. Selective Inhibition of Mitochondrial Sodium-Calcium Exchanger Protects Striatal Neurons from α -Synuclein plus Rotenone Induced Toxicity. *Cell Death Dis.* **2019**, *10*, 1–10. [[CrossRef](#)] [[PubMed](#)]

108. González-Lafuente, L.; Egea, J.; León, R.; Martínez-Sanz, F.J.; Monjas, L.; Perez, C.; Merino, C.; García-De Diego, A.M.; Rodríguez-Franco, M.I.; García, A.G.; et al. Benzothiazepine CGP37157 and Its Isosteric 2'-Methyl Analogue Provide Neuroprotection and Block Cell Calcium Entry. *ACS Chem. Neurosci.* **2012**, *3*, 519–529. [[CrossRef](#)]
109. Gandhi, S.; Vaarmann, A.; Yao, Z.; Duchon, M.R.; Wood, N.W.; Abramov, A.Y. Dopamine Induced Neurodegeneration in a PINK1 Model of Parkinson's Disease. *PLoS ONE* **2012**, *7*, e37564. [[CrossRef](#)]
110. Puentes, L.N.; Lengyel-Zhand, Z.; Lee, J.Y.; Hsieh, C.J.; Schneider, M.E.; Edwards, K.J.; Luk, K.C.; Lee, V.M.Y.; Trojanowski, J.Q.; Mach, R.H. Poly (ADP-Ribose) Interacts with Phosphorylated α -Synuclein in Post Mortem PD Samples. *Front. Aging Neurosci.* **2021**, *13*, 328. [[CrossRef](#)]
111. Kam, T.I.; Mao, X.; Park, H.; Chou, S.C.; Karuppagounder, S.S.; Umanah, G.E.; Yun, S.P.; Brahmachari, S.; Panicker, N.; Chen, R.; et al. Poly(ADP-Ribose) Drives Pathologic α -Synuclein Neurodegeneration in Parkinson's Disease. *Science* **2018**, *362*, eaat8407. [[CrossRef](#)] [[PubMed](#)]
112. Delgado-Camprubi, M.; Esteras, N.; Soutar, M.P.; Plun-Favreau, H.; Abramov, A.Y. Deficiency of Parkinson's Disease-Related Gene Fbxo7 Is Associated with Impaired Mitochondrial Metabolism by PARP Activation. *Cell Death Differ.* **2016**, *24*, 120–131. [[CrossRef](#)] [[PubMed](#)]
113. Lehmann, S.; Loh, S.H.Y.; Martins, L.M. Enhancing NAD⁺ Salvage Metabolism Is Neuroprotective in a PINK1 Model of Parkinson's Disease. *Biol. Open* **2017**, *6*, 141–147. [[CrossRef](#)] [[PubMed](#)]
114. Lehmann, S.; Costa, A.C.; Celardo, I.; Loh, S.H.Y.; Martins, L.M. Parp Mutations Protect against Mitochondrial Dysfunction and Neurodegeneration in a PARKIN Model of Parkinson's Disease. *Cell Death Dis.* **2016**, *7*, e2166. [[CrossRef](#)]
115. Boxer, A.L.; Miller, B.L. Clinical Features of Frontotemporal Dementia. *Alzheimer Dis. Assoc. Disord.* **2005**, *19* (Suppl. S1), S3–S6. [[CrossRef](#)]
116. Onyike, C.U.; Diehl-Schmid, J. The Epidemiology of Frontotemporal Dementia. *Int. Rev. Psychiatry* **2013**, *25*, 130. [[CrossRef](#)]
117. Goedert, M.; Spillantini, M.G. Pathogenesis of the Tauopathies. *J. Mol. Neurosci.* **2011**, *45*, 425–431. [[CrossRef](#)]
118. Leveille, E.; Ross, O.A.; Gan-Or, Z. Tau and MAPT Genetics in Tauopathies and Synucleinopathies. *Parkinsonism Relat. Disord.* **2021**, *90*. [[CrossRef](#)]
119. Peggion, C.; Massimino, M.L.; Bonadio, R.S.; Lia, F.; Lopreiato, R.; Cagnin, S.; Cali, T.; Bertoli, A. Regulation of Endoplasmic Reticulum–Mitochondria Tethering and Ca²⁺ Fluxes by TDP-43 via GSK3 β . *Int. J. Mol. Sci.* **2021**, *22*, 11853. [[CrossRef](#)]
120. Stoica, R.; Paillusson, S.; Gomez-Suaga, P.; Mitchell, J.C.; Lau, D.H.; Gray, E.H.; Sancho, R.M.; Vizcay-Barrena, G.; De Vos, K.J.; Shaw, C.E.; et al. ALS/FTD-Associated FUS Activates GSK-3 β to Disrupt the VAPB-PTPIP51 Interaction and ER-Mitochondria Associations. *EMBO Rep.* **2016**, *17*, 1326–1342. [[CrossRef](#)]
121. Stoica, R.; De Vos, K.J.; Paillusson, S.; Mueller, S.; Sancho, R.M.; Lau, K.F.; Vizcay-Barrena, G.; Lin, W.L.; Xu, Y.F.; Lewis, J.; et al. ER–Mitochondria Associations Are Regulated by the VAPB–PTPIP51 Interaction and Are Disrupted by ALS/FTD-Associated TDP-43. *Nat. Commun.* **2014**, *5*, 3996. [[CrossRef](#)] [[PubMed](#)]
122. Dafinca, R.; Scaber, J.; Ababneh, N.; Lalic, T.; Weir, G.; Christian, H.; Vowles, J.; Douglas, A.G.L.; Fletcher-Jones, A.; Browne, C.; et al. C9orf72 Hexanucleotide Expansions Are Associated with Altered Endoplasmic Reticulum Calcium Homeostasis and Stress Granule Formation in Induced Pluripotent Stem Cell-Derived Neurons from Patients with Amyotrophic Lateral Sclerosis and Frontotemporal Dementia. *Stem Cells* **2016**, *34*, 2063–2078. [[CrossRef](#)] [[PubMed](#)]
123. Esteras, N.; Kundel, F.; Amodeo, G.F.; Pavlov, E.V.; Klenerman, D.; Abramov, A.Y. Insoluble Tau Aggregates Induce Neuronal Death through Modification of Membrane Ion Conductance, Activation of Voltage-Gated Calcium Channels and NADPH Oxidase. *FEBS J.* **2021**, *288*, 127–141. [[CrossRef](#)] [[PubMed](#)]
124. Patel, N.; Ramachandran, S.; Azimov, R.; Kagan, B.L.; Lal, R. Ion Channel Formation by Tau Protein: Implications Alzheimer's Disease and Tauopathies. *Biochemistry* **2015**, *54*, 7320. [[CrossRef](#)]
125. Esteras, N.; Rohrer, J.D.; Hardy, J.; Wray, S.; Abramov, A.Y. Mitochondrial Hyperpolarization in iPSC-Derived Neurons from Patients of FTDP-17 with 10 + 16 MAPT Mutation Leads to Oxidative Stress and Neurodegeneration. *Redox Biol.* **2017**, *12*, 410–422. [[CrossRef](#)]
126. Esteras, N.; Kopach, O.; Maiolino, M.; Lariccia, V.; Amoroso, S.; Qamar, S.; Wray, S.; Rusakov, D.A.; Jaganjac, M.; Abramov, A.Y. Mitochondrial ROS Control Neuronal Excitability and Cell Fate in Frontotemporal Dementia. *Alzheimers Dement.* **2021**. *online ahead of print.* [[CrossRef](#)]
127. Kopach, O.; Esteras, N.; Wray, S.; Rusakov, D.A.; Abramov, A.Y. Maturation and Phenotype of Pathophysiological Neuronal Excitability of Human Cells in Tau-Related Dementia. *J. Cell Sci.* **2020**, *133*, jcs241687. [[CrossRef](#)]
128. Decker, J.M.; Krüger, L.; Sydow, A.; Dennissen, F.J.; Siskova, Z.; Mandelkow, E.; Mandelkow, E. The Tau/A152T Mutation, a Risk Factor for Frontotemporal-Spectrum Disorders, Leads to NR2B Receptor-Mediated Excitotoxicity. *EMBO Rep.* **2016**, *17*, 552–569. [[CrossRef](#)]
129. Dafinca, R.; Barbagallo, P.; Farrimond, L.; Candalija, A.; Scaber, J.; Ababneh, N.A.; Sathyaprakash, C.; Vowles, J.; Cowley, S.A.; Talbot, K. Impairment of Mitochondrial Calcium Buffering Links Mutations in C9ORF72 and TARDBP in IPS-Derived Motor Neurons from Patients with ALS/FTD. *Stem Cell Rep.* **2020**, *14*, 892–908. [[CrossRef](#)]
130. Smith, E.F.; Shaw, P.J.; De Vos, K.J. The Role of Mitochondria in Amyotrophic Lateral Sclerosis. *Neurosci. Lett.* **2019**, *710*, 132933. [[CrossRef](#)]

131. Rojas, F.; Gonzalez, D.; Cortes, N.; Ampuero, E.; Hernández, D.E.; Fritz, E.; Abarzua, S.; Martinez, A.; Elorza, A.A.; Alvarez, A.; et al. Reactive Oxygen Species Trigger Motoneuron Death in Non-Cell-Autonomous Models of ALS through Activation of c-Abl Signaling. *Front. Cell. Neurosci.* **2015**, *9*, 203. [[CrossRef](#)] [[PubMed](#)]
132. Cozzolino, M.; Carri, M.T. Mitochondrial Dysfunction in ALS. *Prog. Neurobiol.* **2012**, *97*, 54–66. [[CrossRef](#)] [[PubMed](#)]
133. Angelova, P.R.; Abramov, A.Y.; Angelova, P.R.; Abramov, A.Y. Role of Mitochondrial ROS in the Brain: From Physiology to Neurodegeneration. *FEBS Lett.* **2018**, *592*, 692–702. [[CrossRef](#)] [[PubMed](#)]
134. Gandhi, S.; Abramov, A.Y. Mechanism of Oxidative Stress in Neurodegeneration. *Oxid. Med. Cell. Longev.* **2012**. [[CrossRef](#)] [[PubMed](#)]
135. Zhou, J.; Li, A.; Li, X.; Yi, J. Dysregulated Mitochondrial Ca²⁺ and ROS Signaling in Skeletal Muscle of ALS Mouse Model. *Arch. Biochem. Biophys.* **2019**, *663*, 249–258. [[CrossRef](#)] [[PubMed](#)]
136. Sasaki, S.; Iwata, M. Mitochondrial Alterations in the Spinal Cord of Patients with Sporadic Amyotrophic Lateral Sclerosis. *J. Neuropathol. Exp. Neurol.* **2007**, *66*, 10–16. [[CrossRef](#)]
137. Wiedemann, F.R.; Winkler, K.; Kuznetsov, A.V.; Bartels, C.; Vielhaber, S.; Feistner, H.; Kunz, W.S. Impairment of Mitochondrial Function in Skeletal Muscle of Patients with Amyotrophic Lateral Sclerosis. *J. Neurol. Sci.* **1998**, *156*, 65–72. [[CrossRef](#)]
138. Crugnola, V.; Lamperti, C.; Lucchini, V.; Ronchi, D.; Peverelli, L.; Prelle, A.; Sciacco, M.; Bordoni, A.; Fassone, E.; Fortunato, F.; et al. Mitochondrial Respiratory Chain Dysfunction in Muscle from Patients with Amyotrophic Lateral Sclerosis. *Arch. Neurol.* **2010**, *67*, 849–854. [[CrossRef](#)]
139. Bartolome, F.; Esteras, N.; Martin-Requero, A.; Boutoleau-Bretonniere, C.; Vercelletto, M.; Gabelle, A.; Le Ber, I.; Honda, T.; Dinkova-Kostova, A.T.; Hardy, J.; et al. Pathogenic P62/SQSTM1 Mutations Impair Energy Metabolism through Limitation of Mitochondrial Substrates. *Sci. Rep.* **2017**, *7*, 1666. [[CrossRef](#)]
140. Tadic, V.; Prell, T.; Lautenschlaeger, J.; Grosskreutz, J. The ER Mitochondria Calcium Cycle and ER Stress Response as Therapeutic Targets in Amyotrophic Lateral Sclerosis. *Front. Cell. Neurosci.* **2014**, *8*, 147. [[CrossRef](#)]
141. Grosskreutz, J.; Van Den Bosch, L.; Keller, B.U. Calcium Dysregulation in Amyotrophic Lateral Sclerosis. *Cell Calcium* **2010**, *47*, 165–174. [[CrossRef](#)] [[PubMed](#)]
142. Van Den Bosch, L.; Van Damme, P.; Bogaert, E.; Robberecht, W. The Role of Excitotoxicity in the Pathogenesis of Amyotrophic Lateral Sclerosis. *Biochim. Biophys. Acta* **2006**, *1762*, 1068–1082. [[CrossRef](#)] [[PubMed](#)]
143. Carriedo, S.G.; Sensi, S.L.; Yin, H.Z.; Weiss, J.H. AMPA Exposures Induce Mitochondrial Ca²⁺ Overload and ROS Generation in Spinal Motor Neurons In Vitro. *J. Neurosci.* **2000**, *20*, 240. [[CrossRef](#)] [[PubMed](#)]
144. Williams, T.L.; Day, N.C.; Ince, P.G.; Kamboj, R.K.; Shaw, P.J. Calcium-Permeable Alpha-Amino-3-Hydroxy-5-Methyl-4-Isoxazole Propionic Acid Receptors: A Molecular Determinant of Selective Vulnerability in Amyotrophic Lateral Sclerosis. *Ann. Neurol.* **1997**, *42*, 200–207. [[CrossRef](#)]
145. Van Den Bosch, L.; Vandenberghe, W.; Klaassen, H.; Van Houtte, E.; Robberecht, W. Ca²⁺-Permeable AMPA Receptors and Selective Vulnerability of Motor Neurons. *J. Neurol. Sci.* **2000**, *180*, 29–34. [[CrossRef](#)]
146. Tateno, M.; Sadakata, H.; Tanaka, M.; Itohara, S.; Shin, R.M.; Miura, M.; Masuda, M.; Aosaki, T.; Urushitani, M.; Misawa, H.; et al. Calcium-Permeable AMPA Receptors Promote Misfolding of Mutant SOD1 Protein and Development of Amyotrophic Lateral Sclerosis in a Transgenic Mouse Model. *Hum. Mol. Genet.* **2004**, *13*, 2183–2196. [[CrossRef](#)]
147. Ince, P.; Stout, N.; Shaw, P.; Slade, J.; Hunziker, W.; Heizmann, C.W.; Baimbridge, K.G. Parvalbumin and Calbindin D-28k in the Human Motor System and in Motor Neuron Disease. *Neuropathol. Appl. Neurobiol.* **1993**, *19*, 291–299. [[CrossRef](#)]
148. Alexianu, M.E.; Ho, B.-K.; Mohamed, A.H.; La Bella, V.; Smith, R.G.; Appel, S.H. The Role of Calcium-Binding Proteins in Selective Motoneuron Vulnerability in Amyotrophic Lateral Sclerosis. *Ann. Neurol.* **1994**, *36*, 846–858. [[CrossRef](#)]
149. Elliott, J.L.; Snider, W.D. Parvalbumin Is a Marker of ALS-Resistant Motor Neurons. *Neuroreport* **1995**, *6*, 449–452. [[CrossRef](#)]
150. Vanselow, B.K.; Keller, B.U. Calcium Dynamics and Buffering in Oculomotor Neurons from Mouse That Are Particularly Resistant during Amyotrophic Lateral Sclerosis (ALS)-Related Motoneuron Disease. *J. Physiol.* **2000**, *525*, 433. [[CrossRef](#)]
151. Grosskreutz, J.; Haastert, K.; Dewil, M.; Van Damme, P.; Callewaert, G.; Robberecht, W.; Dengler, R.; Van Den Bosch, L. Role of Mitochondria in Kainate-Induced Fast Ca²⁺ Transients in Cultured Spinal Motor Neurons. *Cell Calcium* **2007**, *42*, 59–69. [[CrossRef](#)] [[PubMed](#)]
152. Damiano, M.; Starkov, A.A.; Petri, S.; Kipiani, K.; Kiaei, M.; Mattiazzi, M.; Flint Beal, M.; Manfredi, G. Neural Mitochondrial Ca²⁺ Capacity Impairment Precedes the Onset of Motor Symptoms in G93A Cu/Zn-Superoxide Dismutase Mutant Mice. *J. Neurochem.* **2006**, *96*, 1349–1361. [[CrossRef](#)] [[PubMed](#)]
153. Rothstein, J.D.; Martin, L.J.; Kuncl, R.W. Decreased Glutamate Transport by the Brain and Spinal Cord in Amyotrophic Lateral Sclerosis. *N. Engl. J. Med.* **1992**, *326*, 1464–1468. [[CrossRef](#)] [[PubMed](#)]
154. Rao, S.D.; Yin, H.Z.; Weiss, J.H. Disruption of Glial Glutamate Transport by Reactive Oxygen Species Produced in Motor Neurons. *J. Neurosci.* **2003**, *23*, 2627–2633. [[CrossRef](#)]
155. Abramov, A.Y.; Duchon, M.R. Impaired Mitochondrial Bioenergetics Determines Glutamate-Induced Delayed Calcium Deregulation in Neurons. *Biochim. Biophys. Acta* **2010**, *1800*, 297–304. [[CrossRef](#)]
156. Bernard-Marissal, N.; Chrast, R.; Schneider, B.L. Endoplasmic Reticulum and Mitochondria in Diseases of Motor and Sensory Neurons: A Broken Relationship? *Cell Death Dis.* **2018**, *9*, 333. [[CrossRef](#)]
157. De vos, K.J.; Mórotz, G.M.; Stoica, R.; Tudor, E.L.; Lau, K.F.; Ackerley, S.; Warley, A.; Shaw, C.E.; Miller, C.C.J. VAPB Interacts with the Mitochondrial Protein PTPIP51 to Regulate Calcium Homeostasis. *Hum. Mol. Genet.* **2012**, *21*, 1299–1311. [[CrossRef](#)]

158. Bernard-Marissal, N.; Médard, J.J.; Azzedine, H.; Chrast, R. Dysfunction in Endoplasmic Reticulum-Mitochondria Crosstalk Underlies SIGMAR1 Loss of Function Mediated Motor Neuron Degeneration. *Brain* **2015**, *138*, 875–890. [[CrossRef](#)]
159. Nguyen, K.T.; García-Chacón, L.E.; Barrett, J.N.; Barrett, E.F.; David, G. The Ψ m Depolarization That Accompanies Mitochondrial Ca^{2+} Uptake Is Greater in Mutant SOD1 than in Wild-Type Mouse Motor Terminals. *Proc. Natl. Acad. Sci. USA* **2009**, *106*, 2007–2011. [[CrossRef](#)]
160. Xiao, Y.; Karam, C.; Yi, J.; Zhang, L.; Li, X.; Yoon, D.; Wang, H.; Dhakal, K.; Ramlow, P.; Yu, T.; et al. ROS-Related Mitochondrial Dysfunction in Skeletal Muscle of an ALS Mouse Model during the Disease Progression. *Pharmacol. Res.* **2018**, *138*, 25–36. [[CrossRef](#)]
161. Rao, S.D.; Weiss, J.H. Excitotoxic and Oxidative Cross-Talk between Motor Neurons and Glia in ALS Pathogenesis. *Trends Neurosci.* **2004**, *27*, 17–23. [[CrossRef](#)] [[PubMed](#)]
162. Fritz, E.; Izaurieta, P.; Weiss, A.; Mir, F.R.; Rojas, P.; Gonzalez, D.; Rojas, F.; Brown, R.H.; Madrid, R.; van Zundert, B. Mutant SOD1-Expressing Astrocytes Release Toxic Factors That Trigger Motoneuron Death by Inducing Hyperexcitability. *J. Neurophysiol.* **2013**, *109*, 2803–2814. [[CrossRef](#)] [[PubMed](#)]
163. Rojas, F.; Cortes, N.; Abarzua, S.; Dyrda, A.; van Zundert, B. Astrocytes Expressing Mutant SOD1 and TDP43 Trigger Motoneuron Death That Is Mediated via Sodium Channels and Nitroxidative Stress. *Front. Cell. Neurosci.* **2014**, *8*, 24. [[CrossRef](#)] [[PubMed](#)]
164. Rasola, A.; Bernardi, P. Mitochondrial Permeability Transition in Ca^{2+} -Dependent Apoptosis and Necrosis. *Cell Calcium* **2011**, *50*, 222–233. [[CrossRef](#)] [[PubMed](#)]
165. Dobrowolny, G.; Aucello, M.; Rizzuto, E.; Beccafico, S.; Mammucari, C.; Boncompagni, S.; Belia, S.; Wannenes, F.; Nicoletti, C.; Del Prete, Z.; et al. Skeletal Muscle Is a Primary Target of SOD1G93A-Mediated Toxicity. *Cell Metab.* **2008**, *8*, 425–436. [[CrossRef](#)]
166. Zhou, J.; Yi, J.; Fu, R.; Liu, E.; Siddique, T.; Rios, E.; Deng, H.X. Hyperactive Intracellular Calcium Signaling Associated with Localized Mitochondrial Defects in Skeletal Muscle of an Animal Model of Amyotrophic Lateral Sclerosis. *J. Biol. Chem.* **2010**, *285*, 705–712. [[CrossRef](#)]
167. Loeffler, J.P.; Picchiarelli, G.; Dupuis, L.; Gonzalez De Aguilar, J.L. The Role of Skeletal Muscle in Amyotrophic Lateral Sclerosis. *Brain Pathol.* **2016**, *26*, 227–236. [[CrossRef](#)]
168. Fischer, L.R.; Culver, D.G.; Tennant, P.; Davis, A.A.; Wang, M.; Castellano-Sanchez, A.; Khan, J.; Polak, M.A.; Glass, J.D. Amyotrophic Lateral Sclerosis Is a Distal Axonopathy: Evidence in Mice and Man. *Exp. Neurol.* **2004**, *185*, 232–240. [[CrossRef](#)]
169. Yi, J.; Ma, C.; Li, Y.; Weisleder, N.; Ríos, E.; Ma, J.; Zhou, J. Mitochondrial Calcium Uptake Regulates Rapid Calcium Transients in Skeletal Muscle during Excitation-Contraction (E-C) Coupling. *J. Biol. Chem.* **2011**, *286*, 32436–32443. [[CrossRef](#)]
170. Meszlényi, V.; Patai, R.; Nógrádi, B.; Engelhardt, J.I.; Siklós, L. Commentary: Calcium in the Pathomechanism of Amyotrophic Lateral Sclerosis—Taking Center Stage? *J. Neurol. Neuromed.* **2017**, *2*, 1–4. [[CrossRef](#)]
171. Kim, H.J.; Im, W.; Kim, S.; Sung, H.K.; Sung, J.J.; Kim, M.; Lee, K.W. Calcium-Influx Increases SOD1 Aggregates via Nitric Oxide in Cultured Motor Neurons. *Exp. Mol. Med.* **2007**, *39*, 574–582. [[CrossRef](#)] [[PubMed](#)]
172. Cheng, X.P.; Vinokurov, A.Y.; Zherebtsov, E.A.; Stelmashchuk, O.A.; Angelova, P.R.; Esteras, N.; Abramov, A.Y. Variability of Mitochondrial Energy Balance across Brain Regions. *J. Neurochem.* **2021**, *157*, 1234–1243. [[CrossRef](#)] [[PubMed](#)]
173. Vinokurov, A.Y.; Stelmashuk, O.A.; Ukolova, P.A.; Zherebtsov, E.A.; Abramov, A.Y. Brain Region Specificity in Reactive Oxygen Species Production and Maintenance of Redox Balance. *Free Radic. Biol. Med.* **2021**, *174*, 195–201. [[CrossRef](#)] [[PubMed](#)]
174. Guzman, J.N.; Sánchez-Padilla, J.; Chan, C.S.; Surmeier, D.J. Robust Pacemaking in Substantia Nigra Dopaminergic Neurons. *J. Neurosci.* **2009**, *29*, 11011–11019. [[CrossRef](#)]
175. Angelova, P.R.; Abramov, A.Y. Interaction of Neurons and Astrocytes Underlies the Mechanism of $\text{A}\beta$ -Induced Neurotoxicity. *Biochem. Soc. Trans.* **2014**, *42*, 1286–1290. [[CrossRef](#)]
176. Sokolovski, S.G.; Rafailov, E.U.; Abramov, A.Y.; Angelova, P.R. Singlet Oxygen Stimulates Mitochondrial Bioenergetics in Brain Cells. *Free Radic. Biol. Med.* **2021**, *163*, 306–313. [[CrossRef](#)]