

# An Objective Approach to Measuring Video Playback Quality in Lossy Networks using TCP

Timothy Porter, and Xiao-Hong Peng

**Abstract**—In this work, we investigate a new objective measurement for assessing the video playback quality for the services delivered in the networks that use TCP as a transport layer protocol. We define the new metric as *pause intensity* to characterize the quality of playback in terms of its continuity, as in the case of TCP data packets are protected from losses but not from delays. Using packet traces generated from real TCP connections in a lossy environment, we are able to simulate the playback of a video and monitor buffer behaviours in order to calculate pause intensity values. We also run subjective tests to verify the effectiveness of the metric introduced and show that the results of pause intensity and the subjective scores made over the same real video clips are closely correlated.

**Index Terms**—video playback quality, TCP networks, buffer behavior, pause intensity.

## I. INTRODUCTION

THE development of the *real-time streaming protocol* (RTSP) revolutionized the way multimedia content was delivered over the Internet and the video itself was streamed predominately using the *real-time transport protocol* (RTP) [1]. Since RTP uses the connectionless *user datagram protocol* (UDP) as its underlying transport mechanism, unrecovered packet loss and re-ordering incidents were expected within congested networks. Whilst a local buffer allowed for jitter, the quality of playback would be almost certainly be degraded due to packet loss, regardless of the buffer size.

Modern Internet video playback applications, however, are predominantly Flash based [2], such as Youtube and BBC iPlayer [3] (in the UK), but the more conventional stand-alone media players such as Windows Media Player and VideoLAN Client (VLC) are still widely in use and under constant development. In either case, the *transmission control protocol* (TCP) is used as the transport protocol which now becomes the preferred method of transport rather than a RTP/UDP combination [4]. This is because the majority of video content delivery over the Internet is not live and user's bandwidth is often many times greater than the video bitrate, so buffering in conjunction with retransmission through TCP allows

mitigating the effect of packet loss. As a result, streams remain TCP-friendly [5] which is important for scalability. The loss recovery mechanism provided by TCP also allows the use of newer codecs, such as H.264, with high compression rates and hence being less resilient to data loss [6].

Existing objective measures of perceived video quality, such as the *peak signal-to-noise ratio* (PSNR), are more suited to objectifying the performance of compression algorithms [7]. Moreover, these measurements can only be used when comparing two streams of identical synchronicity, and when one stream is degraded in comparison to the other. This type of measurement is particularly useful when dealing with a UDP video stream [8] since lost packets are not retransmitted. But in the case of using TCP, packets are always recovered if loss occurs, and so momentary degradation is hardly seen. Therefore, PSNR is not a suitable metric to be used for video streaming over TCP. However, we have seen another phenomenon: video pausing due to buffer under-runs, which becomes the main source of quality concerns in video steaming using TCP.

In this letter, we propose a novel method to characterize the perceived quality of a video stream by measuring the degree of interruption caused by pauses during playback. We show how packet loss affects the number of pauses, the average duration per pause and, ultimately, the pause intensity to be defined, given a set of playback criteria such as the playback rate, available bandwidth and buffer size. We also validate the proposed quality metric by showing its correlation with the subjective measurements conducted in the same streaming environment.

## II. PAUSE INTENSITY

In a TCP network, the service delivery time varies as lost packets are retransmitted, causing delays and variable incoming data rates of a buffer at the receiver. If the playback rate is greater than the incoming data rate, the buffer will be utilized and eventually become exhausted, causing the playback to pause. To measure the effect of buffer pausing on the perceived playback quality, we introduce a metric termed *pause intensity* which is contributed jointly by both the number and the duration of pauses during playback. Given the number of pauses per unit time  $u$  and the average duration per pause  $v$ , the pause intensity  $I_p$  is defined as

The authors would like to thank Xyratex and EPSRC for their financial support and guidance.

The authors are with School of Engineering & Applied Science, Aston University, Birmingham, UK (email: {portertr, x-h.peng@aston.ac.uk})

$$I_p = uv \quad (1)$$

If  $V$  is a discrete random variable representing the pause duration, which attains values  $v_1, v_2, \dots$  with occurrence frequency  $f(v_1), f(v_2), \dots$ , the pause intensity can also be obtained by

$$I_p = \sum_{i \in \Phi} [v_i f(v_i)] / T \quad (2)$$

where  $T$  is the total playback time and  $\Phi$  is a set of index for all the pause durations that have been recorded within  $T$ .

Using this metric, we are able to quantify the effect of pauses that directly hamper the perceived quality in terms of the continuity of playback. As the continuity is closely related to the loss performance of data delivery in a TCP network, we will show, through the experiments described below, the relationship between pause intensity and packet loss rates.

### III. EXPERIMENT SETUP

The experimental testbed is based on a TCP connection established between two Linux-based machines (a server and a client) using the *iperf* network utility to generate video streams. A third machine is configured as the *traffic control* (TC) utility between the server and client, used to limit the available bandwidth to 1 Mbit/s. A video bit rate of 900Kbit/s is selected, allowing noticeable observation in changes to the buffer when packet loss is introduced. The network monitoring tool, *tcpdump*, is used to capture and store the timestamp and length of every packet arriving at the *iperf* client. The standard TCP Cubic [9] is used.

Packet loss is introduced on the egress of the server interface using TC, with loss rates ranged between 0%–10% and a 0.5% interval for each capture. The round trip time *RTT* is fixed to be 100 ms for each retransmission that takes place.

Capture files provided by *tcpdump* are parsed by a simulator to control the buffer of a video playback program for growing and shrinking accordingly. With a pre-defined buffer size of 5 Mbit and a video playback rate close to that of the available bandwidth, we are able to monitor the utilization of the buffer and the times when the buffer becomes exhausted and when it recovers. The testbed is configured with thresholds to start and stop playback at certain buffer usage levels in terms of the remaining cached video in the buffer in Mbits.

### IV. RESULTS AND ANALYSIS

First of all, Fig. 1 demonstrates buffer behaviors during playback when there is no loss Fig. 1(a) and at a loss rate of 1.5% Fig. 1(b), respectively. The two thresholds marked show when playback will be paused (the upper line) and subsequently resumed should the buffer recover (the lower line). The duration of each video clip is 1600 seconds if uninterrupted.

As it is shown by Fig. 1(a), during the pre-buffering stage before playback begins, the buffer fills rapidly since there is no

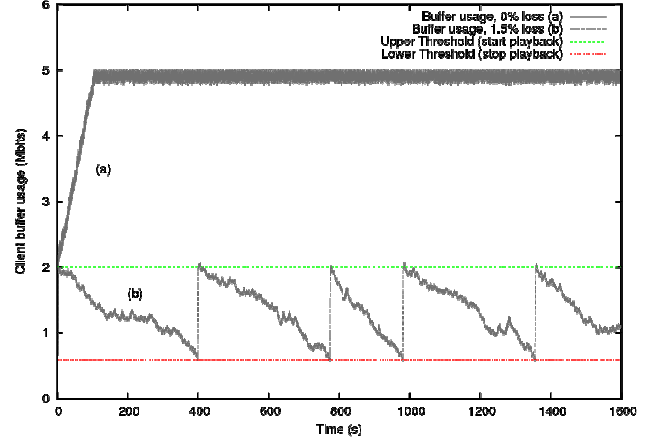


Fig. 1. Buffer behaviors at packet loss rates of 0% (a) and 1.5% (b).

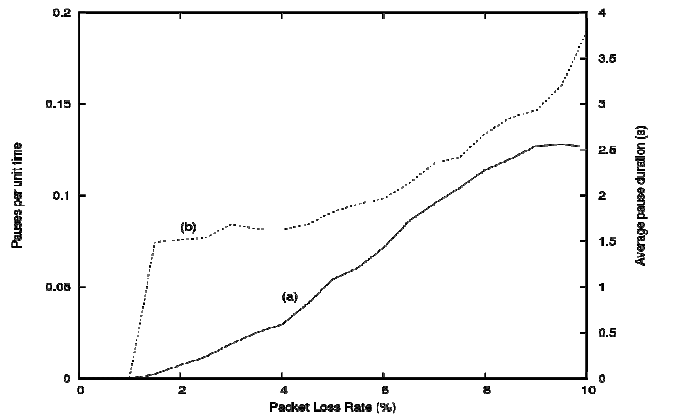


Fig. 2. Number of pauses (a), and average duration per pause (b), against the loss rate.

outgoing data at this time. When the upper threshold is met, the buffer fill rate reduces due to playback of video commencing. The buffer continues to fill at this reduced rate until the maximum capacity of the buffer is reached. Since there is no loss, and the bandwidth available is sufficiently higher than the playback rate, the buffer remains full for the duration of the video clip. When the average packet loss rate increases to 1.5% in the case of Fig. 1(b), losses cause the input data rate to decrease below the playback rate. As expected, the buffer begins to empty until the lower threshold is met and playback is paused. In this example, we see the playback pausing on several occasions whilst the buffer recovers.

Collectively, over an extended range of packet loss rates, we determine the number of pauses experienced during playback, and the duration of the pause in each case. In Fig. 2, the number of pauses per unit time (second),  $u$ , and the average duration in seconds of each pause,  $v$ , are shown for the range of packet loss rates tested by Fig. 2(a) and Fig. 2(b), respectively. As we can see, when the packet loss rate is below 1% the buffer is able to maintain playback for the entire duration of video playback with little or no interruption. As the loss rate exceeds 1%, the buffer is seen to deplete on one or more occasions, leading to pauses in playback. For moderate

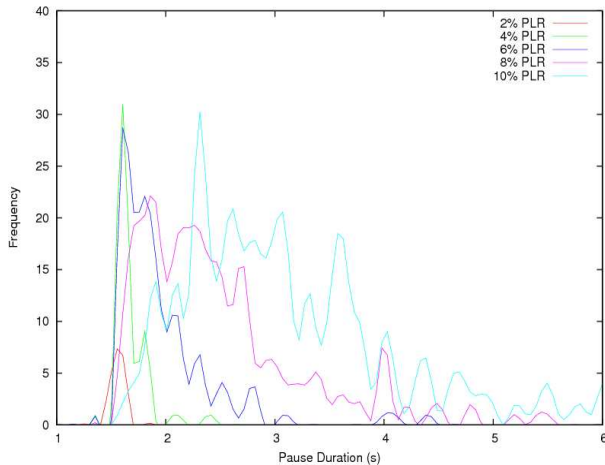


Fig. 3. Distributions of pause durations.

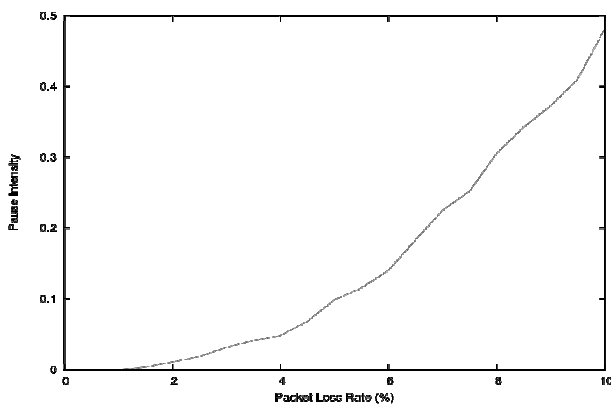


Fig. 4. Pause intensity during playback versus packet loss rates.

levels of packet loss, e.g. 1%–6%, the duration of each pause is predominantly between 1.5 and 2 seconds, despite the pauses themselves becoming more frequent.

The distributions of pause durations in terms of their occurrence frequency are shown in Fig. 3 at different packet loss rates. It is observed that, when network conditions become far poorer, the number of pauses begins to plateau, while the duration of each pause becomes increasingly prolonged.

Based on the results given in Figs. 2 or 3, pause intensity for individual loss rates can be obtained using either Eq. (1) or Eq. (2). In particular, at a specific loss rate, the occurrence frequency  $f(v_i)$  for each duration value  $v_i$  ( $i = 1, 2, \dots$ ) can be found from the corresponding distribution graph, e.g. in Fig. 3, and then Eq. 2 is applied to calculate the pause intensity value. As a result, the relationship between pause intensity and packet loss performance is shown in Fig. 4. It can be seen that pause intensity scales proportionally with the packet loss rate across a range of realistic network conditions, whilst it is untrue if just looking at the performance of the number of pauses or pause duration alone as shown in Fig. 2.

To further establish the effectiveness of the metric defined, a subjective survey was conducted using a series of videos that were paused at the rates and durations with respect to the packet loss rates in our tests. Forty users participated in the survey and gave scores whilst watching the videos. A Mean

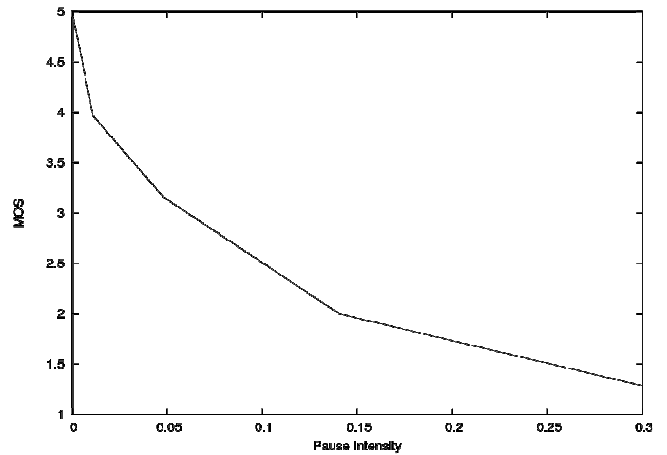


Fig. 5. MOS versus pause intensity.

Opinion Score (MOS) scale from 5 down to 1: *Imperceptible*, *Perceptible but not annoying*, *Slightly annoying*, *Annoying* and *Very annoying*, was used. The subjective result against the objective measurement (pause intensity) based on the same set of videos is shown in Fig. 5. Clearly, pause intensity is seen to be closely correlated with the subjective measurement, and hence can be used to objectify the quality of playback for video streaming over TCP.

## V. CONCLUSION

We propose and experimentally evaluate a new objective metric, namely the pause intensity, for estimating the video playback quality. This metric is especially useful for video streaming over TCP/IP networks as in this case the conventional objective measurement such as PSNR does not apply. In future work, we intend to use pause intensity as a target parameter for selecting appropriate technologies towards performance optimization in video streaming applications.

## REFERENCES

- [1] D. Wu, Y. Hou, W. Zhu, Y.-Q. Zhang, and J. Peha, "Streaming video over the internet: approaches and directions," *IEEE Transactions on Circuits and Systems for Video Technology*, vol. 11, pp. 282–300, 2001.
- [2] J. Emigh, "New flash player rises in the web-video market," *IEEE Computer Magazine*, vol. 39, no. 2, p. 14–16, Feb. 2006.
- [3] BBC iPlayer: [Online]. Available : <http://www.bbc.co.uk/iplayer/>
- [4] Y. Wang, M. Claypool, and Z. Zuo, "An empirical study of realvideo performance across the Internet," ACM SIGCOMM IMW, 2001.
- [5] J. Padhye, V. Firoiu, D. Towsley, and J. Kurose, "Modeling tcp throughput: A simple model and its empirical validation," ACM SIGCOMM, 1998.
- [6] A. Luthra, and P. N. Topiwala, "Overview of the h.264/avc video coding standard," *Applications of Digital Image Processing XXVI*, vol. 5203, no. 1, pp. 417–431, 2003.
- [7] Q. Huynh-Thu, and M. Ghanbari, "Scope of validity of PSNR in image/video quality assessment," *Electronics Letters*, pp. 800–801, 2008.
- [8] J. Afzal, T. Stockhammer, T. Gasiba, and W. Xu, "Video streaming over MBMS: A system design approach," *Jour. of Multimedia*, vol. 1, no. 5, pp. 25–35, Aug. 2006.
- [9] S. Ha, I. Rhee, and L. Xu, "Cubic: a new tcp-friendly high-speed tcp variant," *SIGOPS Oper. Syst. Rev.*, vol. 42, no. 5, pp. 64–74, 2008.